





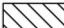





Legend

-  Significant Vegetation
-  Major Biodiversity Corridor
-  Minor Biodiversity Corridor
-  Protected Area
-  State Forest
-  Environmental Reserve
-  Wetland
-  Waterbody
-  Waterway
-  Wildflower Area
-  Urban Area
- General Information**
-  Council Boundary
-  Cadastre

WATERWAY

Waterways (stream order 3 or above) including but not limited to: (1) Condamine River, (2) Moonie River, (3) Weir River, (4) Myall Creek, (5) Charleys Creek, (6) Wongongera Creek, (7) Juandah Creek, (8) Cooranga Creek, (9) Jimbour Creek, (10) Undulla Creek, (11) Humberg Creek, (12) Wambo Creek, (13) Moramby Creek, (14) Burraburri Creek, (15) Dogwood Creek, (16) Cadarga Creek, (17) Johnson Creek, (18) Bungaban Creek, (19) Eurombah Creek, (20) Dulacca Creek, and (21) Horse Creek

WETLAND

Numerous wetlands including but not limited to (1) Spring Wetland (Fenshen and Fauiax 2005)

WATERBODY

(1) Lake Broadwater, (2) The Gums Lagoon and (3) Caliguel Lagoon

PROTECTED AREA

National Park: (1) Bunya Mountains, (2) Southwood, and (3) Erringibba Conservation Park: (4) Bunya Mountains, and (5) Lake Broadwater Resources Reserve: (6) Lake Broadwater, and (7) Stones Country

STATE FOREST

(1) Barakula, (2) Kumbarilla, (3) Boondandilla, (4) Braemar, (5) Nudley, (6) Diamondy, (7) Condamine, (8) Yuleba, (9) Gurulmundi, (10) Warranna, (11) Rosehall, (12) Ballymore, (13) Woodduck, (14) Kinkora, and (15) Ula Ula

ENVIRONMENTAL RESERVE

(1) Bunya Mountains Road Reserve, and (2) Prenzlers Road Reserve

DRAFT

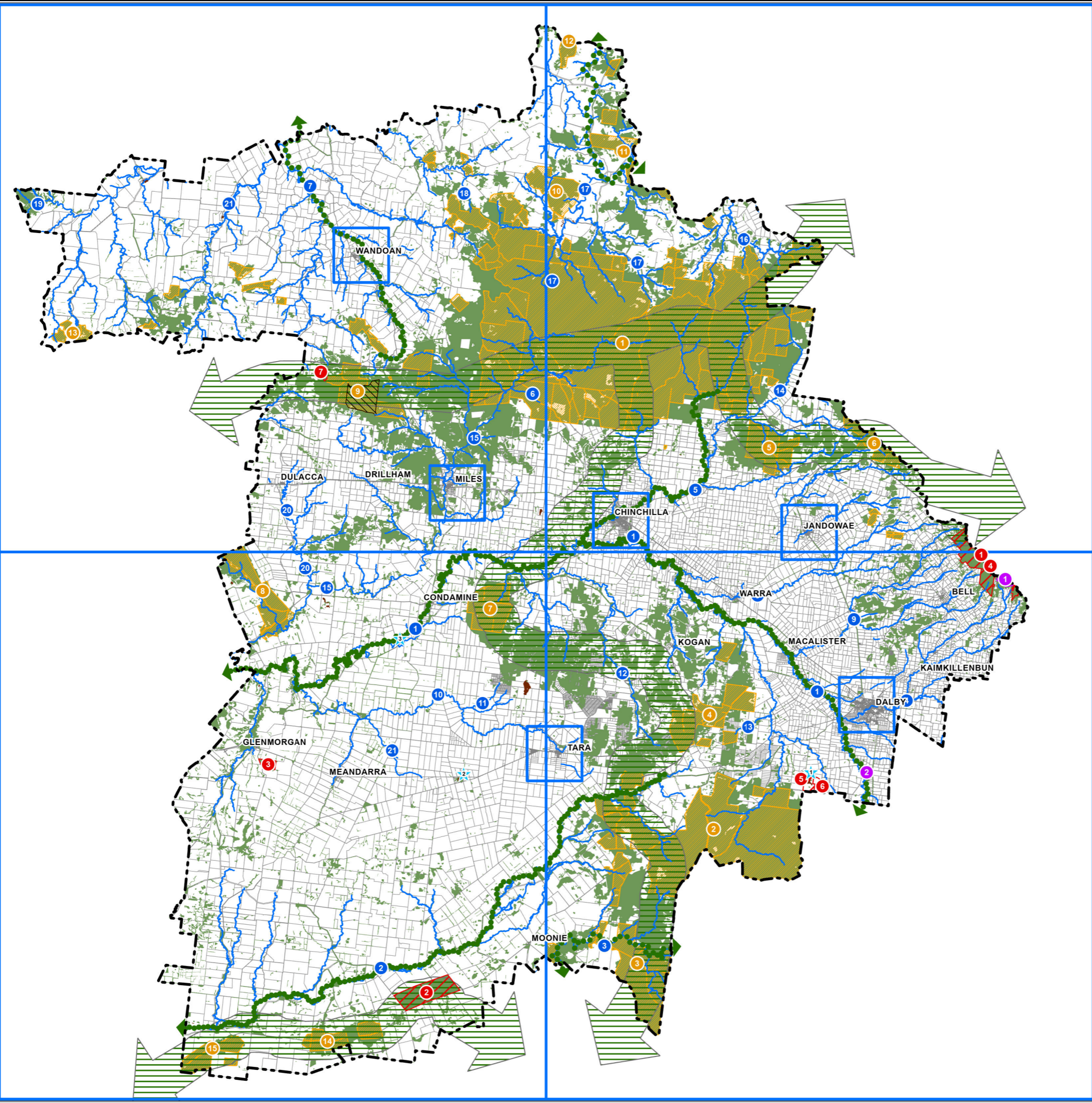
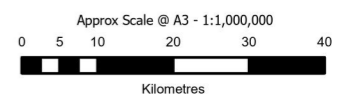
DISCLAIMER:

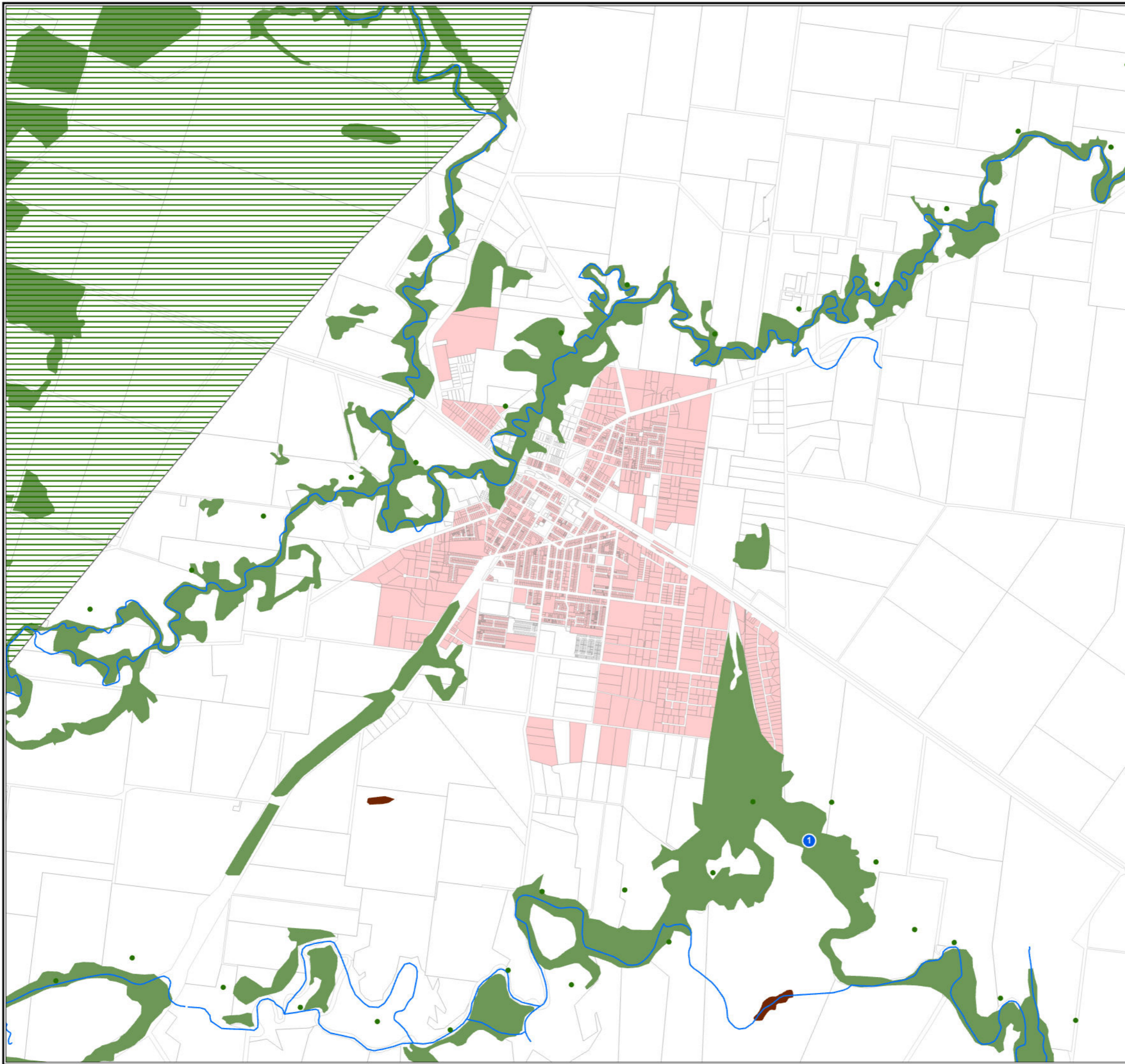
While every care is taken to ensure the accuracy of this product, the Western Downs Regional Council does not make any representations or warranties about its accuracy, reliability, completeness or suitability for any particular purpose and disclaims all responsibility and all liability (including without limitation, liability in negligence) for all expenses, losses, damages (including indirect or consequential damage) and costs that may occur as a result of the product being inaccurate or incomplete in any way or for any reason.

Base material reproduced with the permission of the Director-General, Department of Resources © The State of Queensland (Department of Resources) [2023]

DATA SOURCES: WDRC, QSpatial
Cadastral Boundaries - May 2023 © State of Queensland (Department of Resources) 2021
MSES - May 2023 © State of Queensland (Department of Environment and Science) 2023

© Copyright Western Downs Regional Council 2023
Date Generated : 23/05/2023
Revision 3.0
Coordinate System: GDA 1994 MGA Zone 56





Legend

- Significant Vegetation
- Major Biodiversity Corridor
- Minor Biodiversity Corridor
- Protected Area
- State Forest
- Environmental Reserve
- Wetland
- Waterbody
- Waterway
- Wildflower Area
- Urban Area

General Information

- Council Boundary
- Property Boundary

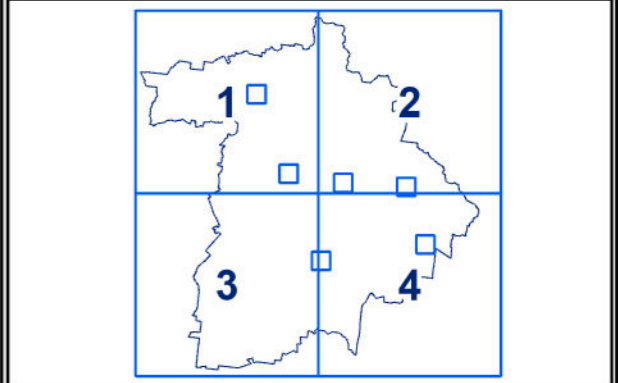
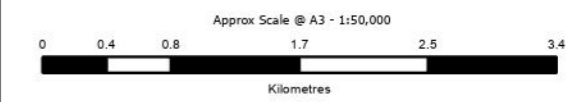
DRAFT

DISCLAIMER:
While every care is taken to ensure the accuracy of this product, the Western Downs Regional Council does not make any representations or warranties about its accuracy, reliability, completeness or suitability for any particular purpose and disclaims all responsibility and all liability (including without limitation, liability in negligence) for all expenses, losses, damages (including indirect or consequential damage) and costs that may occur as a result of the product being inaccurate or incomplete in any way or for any reason.

Base material reproduced with the permission of the Director-General, Department of Resources © The State of Queensland (Department of Resources) [2023]

DATA SOURCES: WDRC, QSpatial
Cadastral Boundaries - May 2023 (© State of Queensland (Department of Resources) 2021)
MSES - May 2023 (© State of Queensland (Department of Environment and Science) 2023)

© Copyright Western Downs Regional Council 2023
Date Generated : 23/05/2023
Revision 3.0
Coordinate System: GDA 1994 MGA Zone 56



SPM-002 (Chinchilla)

Legend

-  Significant Vegetation
-  Major Biodiversity Corridor
-  Minor Biodiversity Corridor
-  Protected Area
-  State Forest
-  Environmental Reserve
-  Wetland
-  Waterbody
-  Waterway
-  Wildflower Area
-  Urban Area

General Information

-  Council Boundary
-  Property Boundary

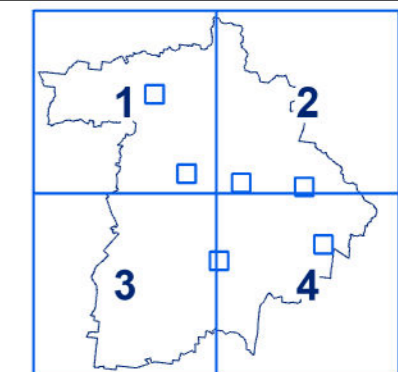
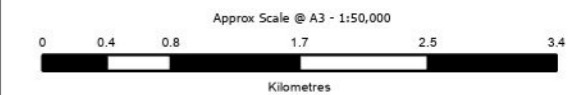
DRAFT

DISCLAIMER:
While every care is taken to ensure the accuracy of this product, the Western Downs Regional Council does not make any representations or warranties about its accuracy, reliability, completeness or suitability for any particular purpose and disclaims all responsibility and all liability (including without limitation, liability in negligence) for all expenses, losses, damages (including indirect or consequential damage) and costs that may occur as a result of the product being inaccurate or incomplete in any way or for any reason.

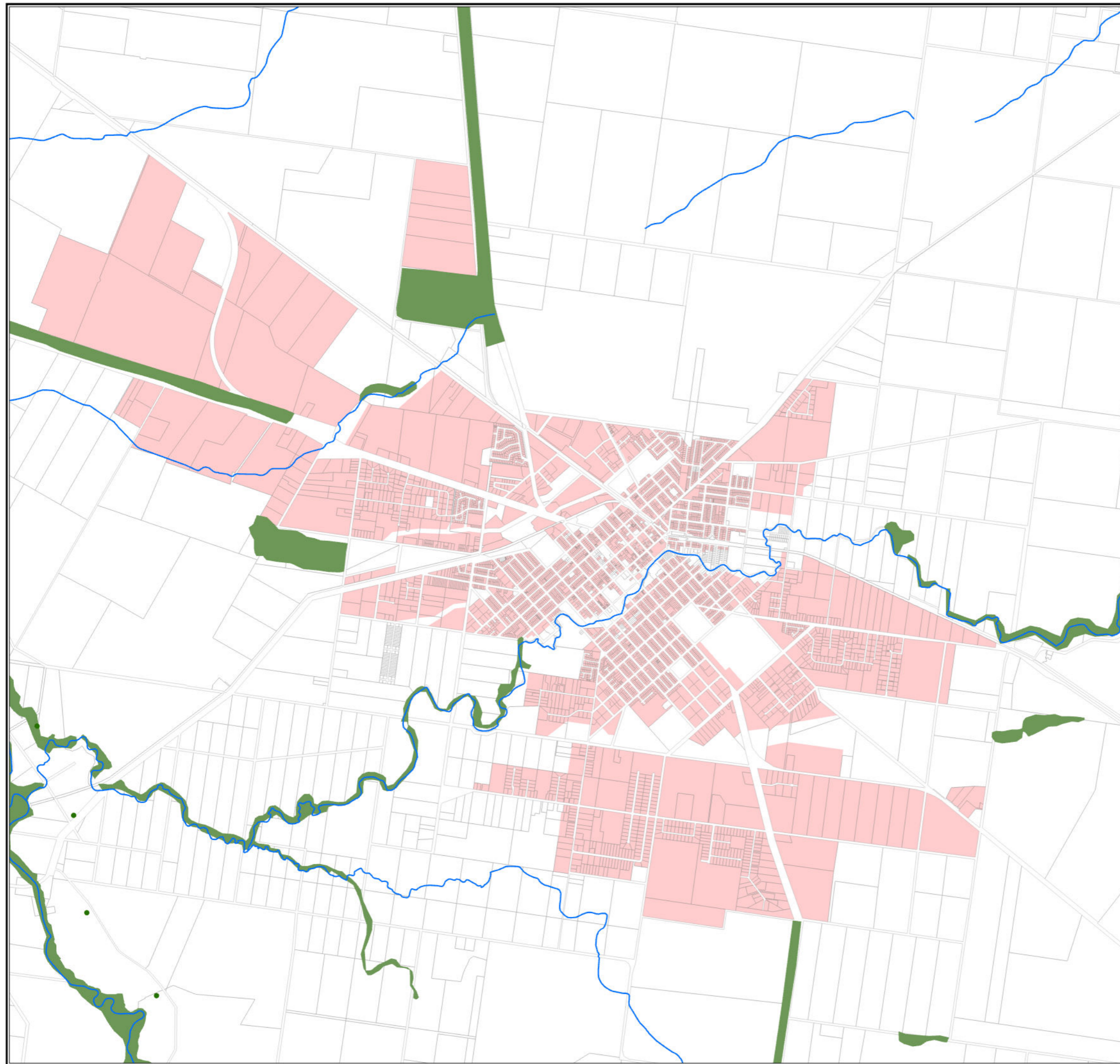
Base material reproduced with the permission of the Director-General, Department of Resources © The State of Queensland (Department of Resources) [2023]

DATA SOURCES: WDRC, QSpatial
Cadastral Boundaries - May 2023 (© State of Queensland (Department of Resources) 2021)
MSES - May 2023 (© State of Queensland (Department of Environment and Science) 2023)


© Copyright Western Downs Regional Council 2023
Date Generated : 23/05/2023
Revision 3.0
Coordinate System: GDA 1994 MGA Zone 56



SPM-002 (Dalby)



Legend

-  Significant Vegetation
-  Major Biodiversity Corridor
-  Minor Biodiversity Corridor
-  Protected Area
-  State Forest
-  Environmental Reserve
-  Wetland
-  Waterbody
-  Waterway
-  Wildflower Area
-  Urban Area
-  Council Boundary
-  Property Boundary

General Information

-  Council Boundary
-  Property Boundary

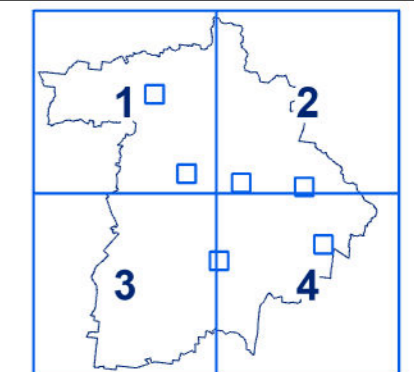
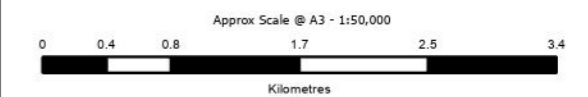
DRAFT

DISCLAIMER:
While every care is taken to ensure the accuracy of this product, the Western Downs Regional Council does not make any representations or warranties about its accuracy, reliability, completeness or suitability for any particular purpose and disclaims all responsibility and all liability (including without limitation, liability in negligence) for all expenses, losses, damages (including indirect or consequential damage) and costs that may occur as a result of the product being inaccurate or incomplete in any way or for any reason.

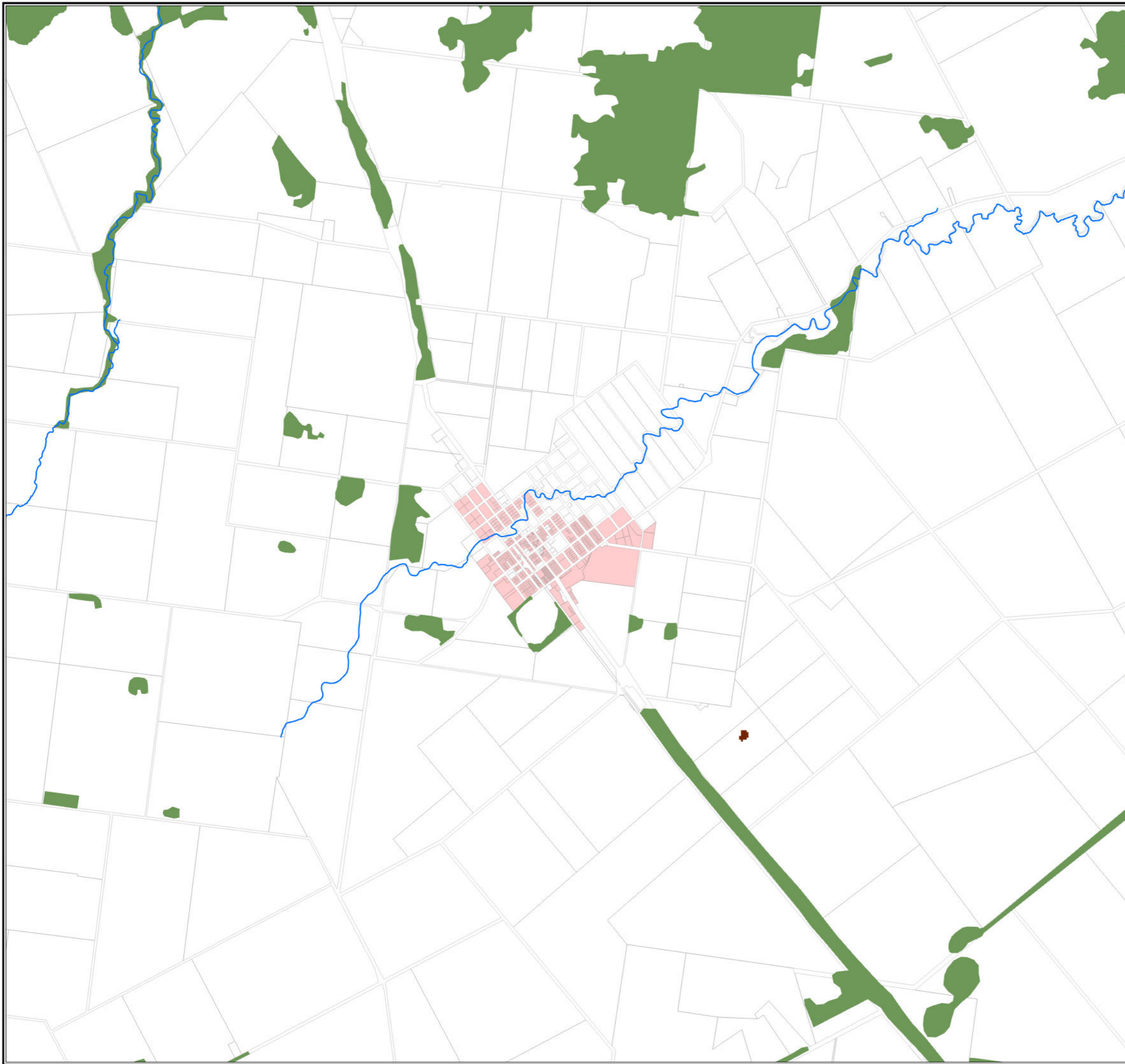
Base material reproduced with the permission of the Director-General, Department of Resources © The State of Queensland (Department of Resources) [2023]

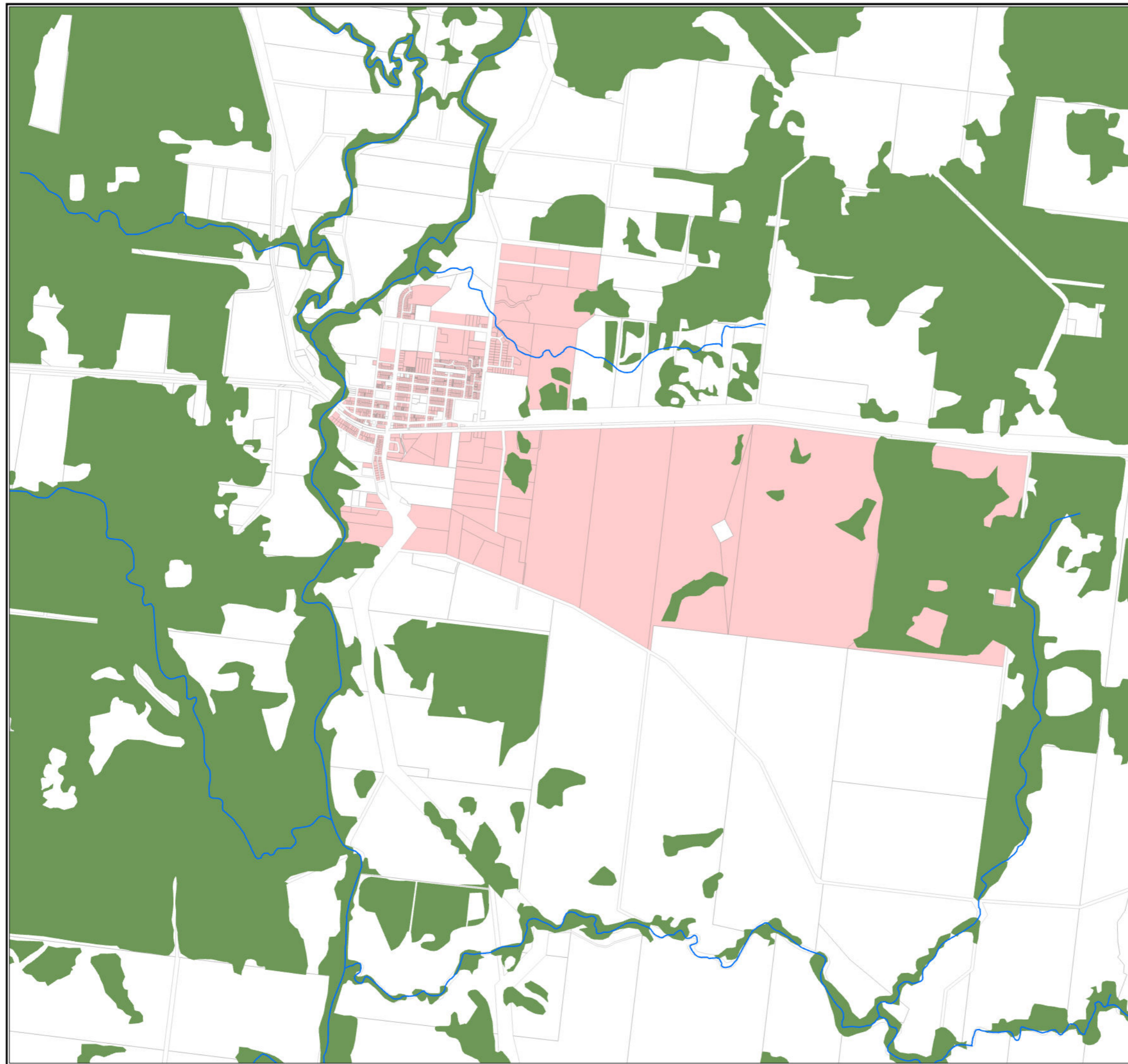
DATA SOURCES: WDRC, QSpatial
Cadastral Boundaries - May 2023 (© State of Queensland (Department of Resources) 2021)
MSES - May 2023 (© State of Queensland (Department of Environment and Science) 2023)

© Copyright Western Downs Regional Council 2023
Date Generated : 23/05/2023
Revision 3.0
Coordinate System: GDA 1994 MGA Zone 56



SPM-002 (Jandowae)





Legend

- Significant Vegetation
- Major Biodiversity Corridor
- Minor Biodiversity Corridor
- Protected Area
- State Forest
- Environmental Reserve
- Wetland
- Waterbody
- Waterway
- Wildflower Area
- Urban Area

General Information

- Council Boundary
- Property Boundary

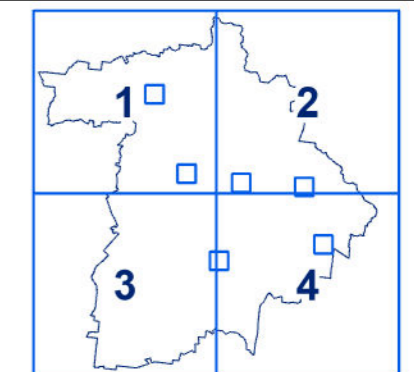
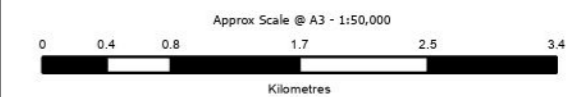
DRAFT

DISCLAIMER:
While every care is taken to ensure the accuracy of this product, the Western Downs Regional Council does not make any representations or warranties about its accuracy, reliability, completeness or suitability for any particular purpose and disclaims all responsibility and all liability (including without limitation, liability in negligence) for all expenses, losses, damages (including indirect or consequential damage) and costs that may occur as a result of the product being inaccurate or incomplete in any way or for any reason.

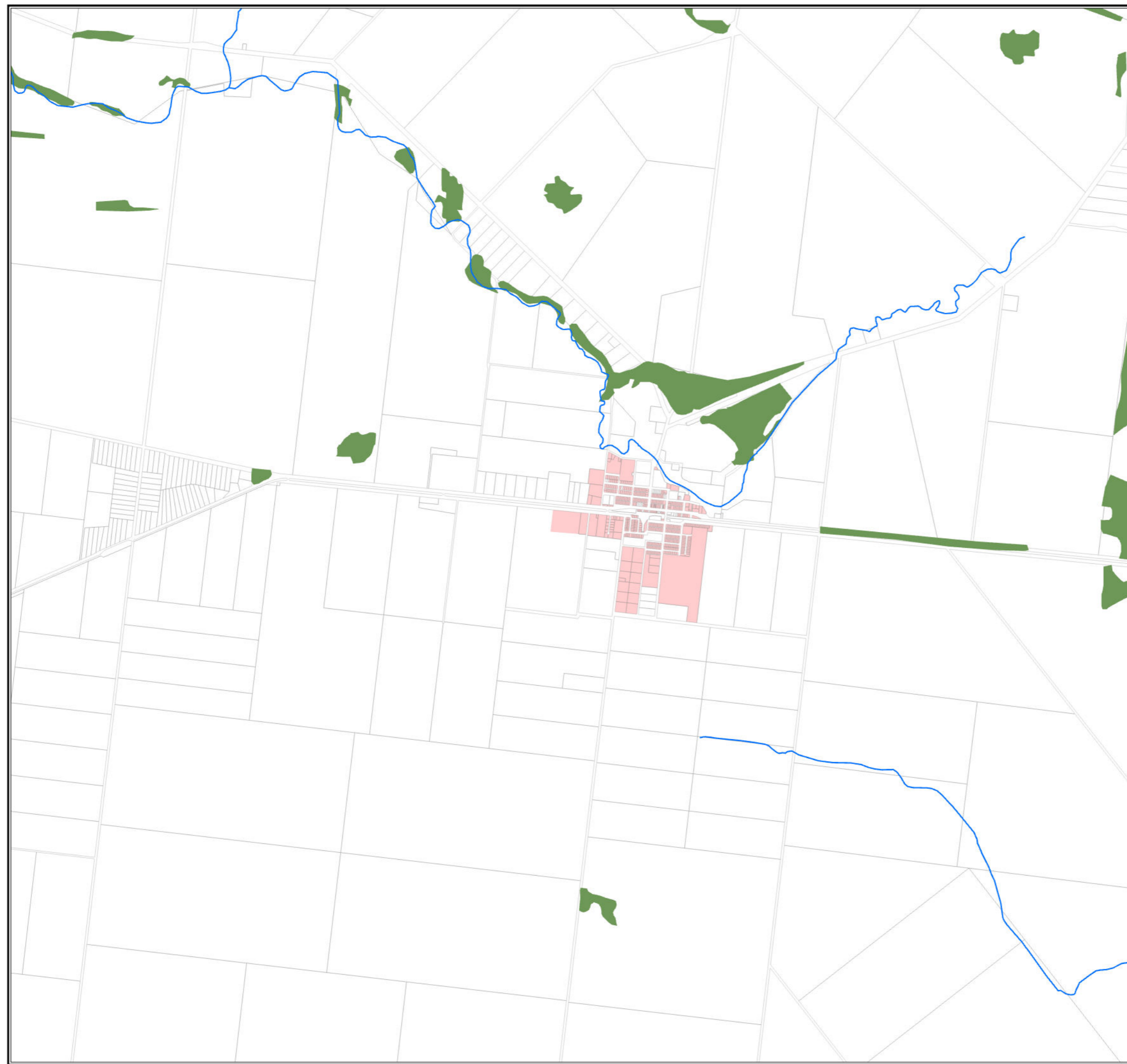
Base material reproduced with the permission of the Director-General, Department of Resources
© The State of Queensland (Department of Resources) [2023]

DATA SOURCES: WDRC, QSpatial
Cadastral Boundaries - May 2023 (© State of Queensland (Department of Resources) 2021)
MSES - May 2023 (© State of Queensland (Department of Environment and Science) 2023)







© Copyright Western Downs Regional Council 2023
Date Generated : 23/05/2023
Revision 3.0
Coordinate System: GDA 1994 MGA Zone 56



SPM-002 (Miles)



Legend

-  Significant Vegetation
-  Major Biodiversity Corridor
-  Minor Biodiversity Corridor
-  Protected Area
-  State Forest
-  Environmental Reserve
-  Wetland
-  Waterbody
-  Waterway
-  Wildflower Area
-  Urban Area

General Information

-  Council Boundary
-  Property Boundary

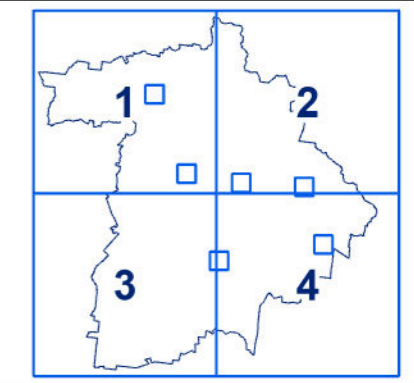
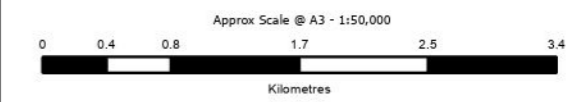
DRAFT

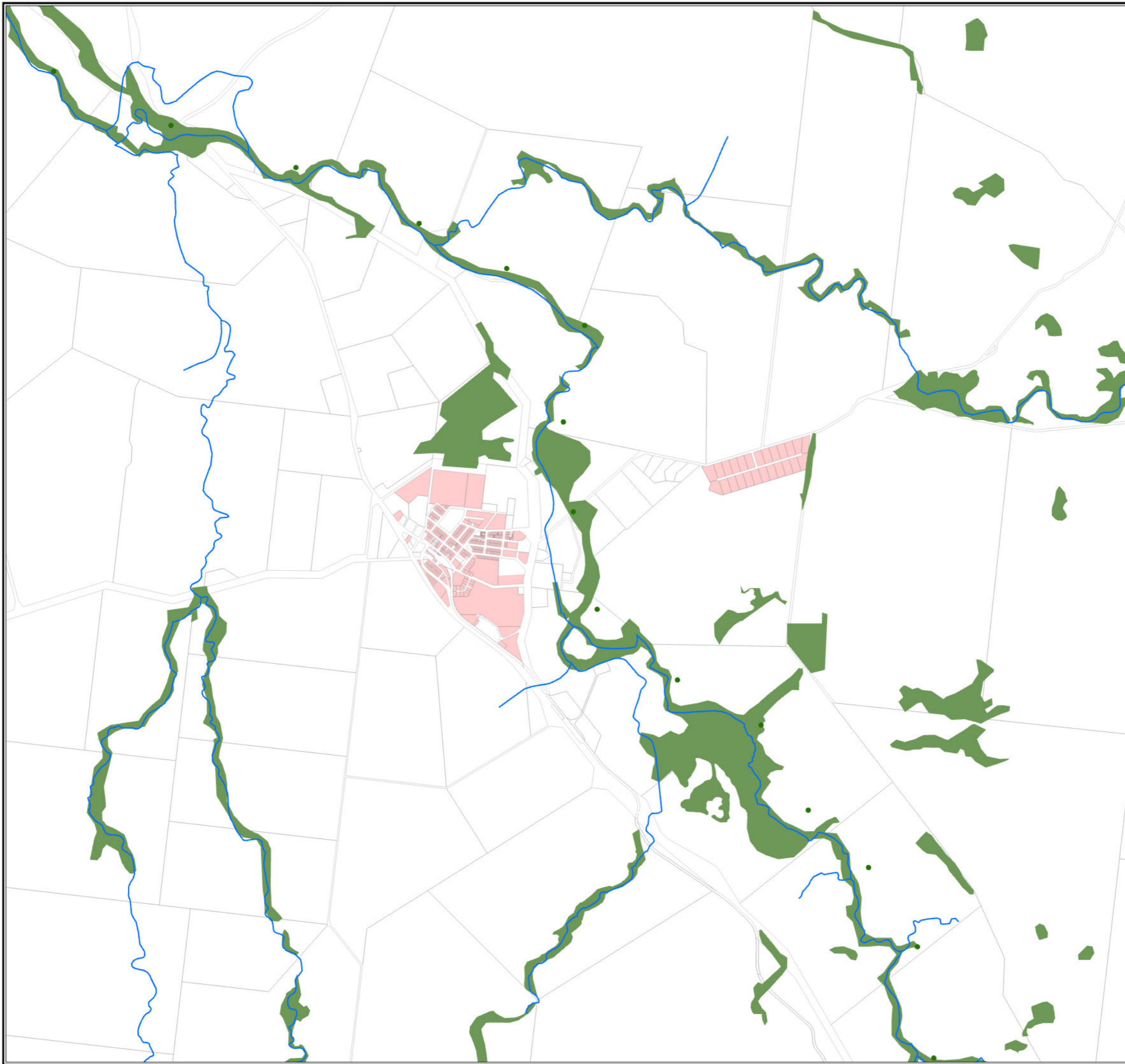
DISCLAIMER:
While every care is taken to ensure the accuracy of this product, the Western Downs Regional Council does not make any representations or warranties about its accuracy, reliability, completeness or suitability for any particular purpose and disclaims all responsibility and all liability (including without limitation, liability in negligence) for all expenses, losses, damages (including indirect or consequential damage) and costs that may occur as a result of the product being inaccurate or incomplete in any way or for any reason.

Base material reproduced with the permission of the Director-General, Department of Resources
© The State of Queensland (Department of Resources) [2023]

DATA SOURCES: WDRC, QSpatial
Cadastral Boundaries - May 2023 (© State of Queensland (Department of Resources) 2021)
MSES - May 2023 (© State of Queensland (Department of Environment and Science) 2023)

© Copyright Western Downs Regional Council 2023
Date Generated : 23/05/2023
Revision 3.0
Coordinate System: GDA 1994 MGA Zone 56





Legend

-  Significant Vegetation
-  Major Biodiversity Corridor
-  Minor Biodiversity Corridor
-  Protected Area
-  State Forest
-  Environmental Reserve
-  Wetland
-  Waterbody
-  Waterway
-  Wildflower Area
-  Urban Area

General Information

-  Council Boundary
-  Property Boundary

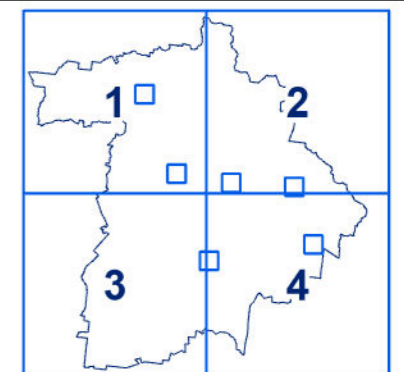
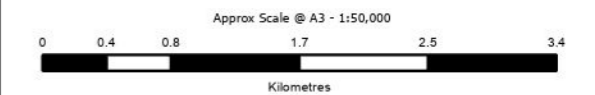
DRAFT

DISCLAIMER:
While every care is taken to ensure the accuracy of this product, the Western Downs Regional Council does not make any representations or warranties about its accuracy, reliability, completeness or suitability for any particular purpose and disclaims all responsibility and all liability (including without limitation, liability in negligence) for all expenses, losses, damages (including indirect or consequential damage) and costs that may occur as a result of the product being inaccurate or incomplete in any way or for any reason.











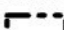
Base material reproduced with the permission of the Director-General, Department of Resources
© The State of Queensland (Department of Resources) [2023]

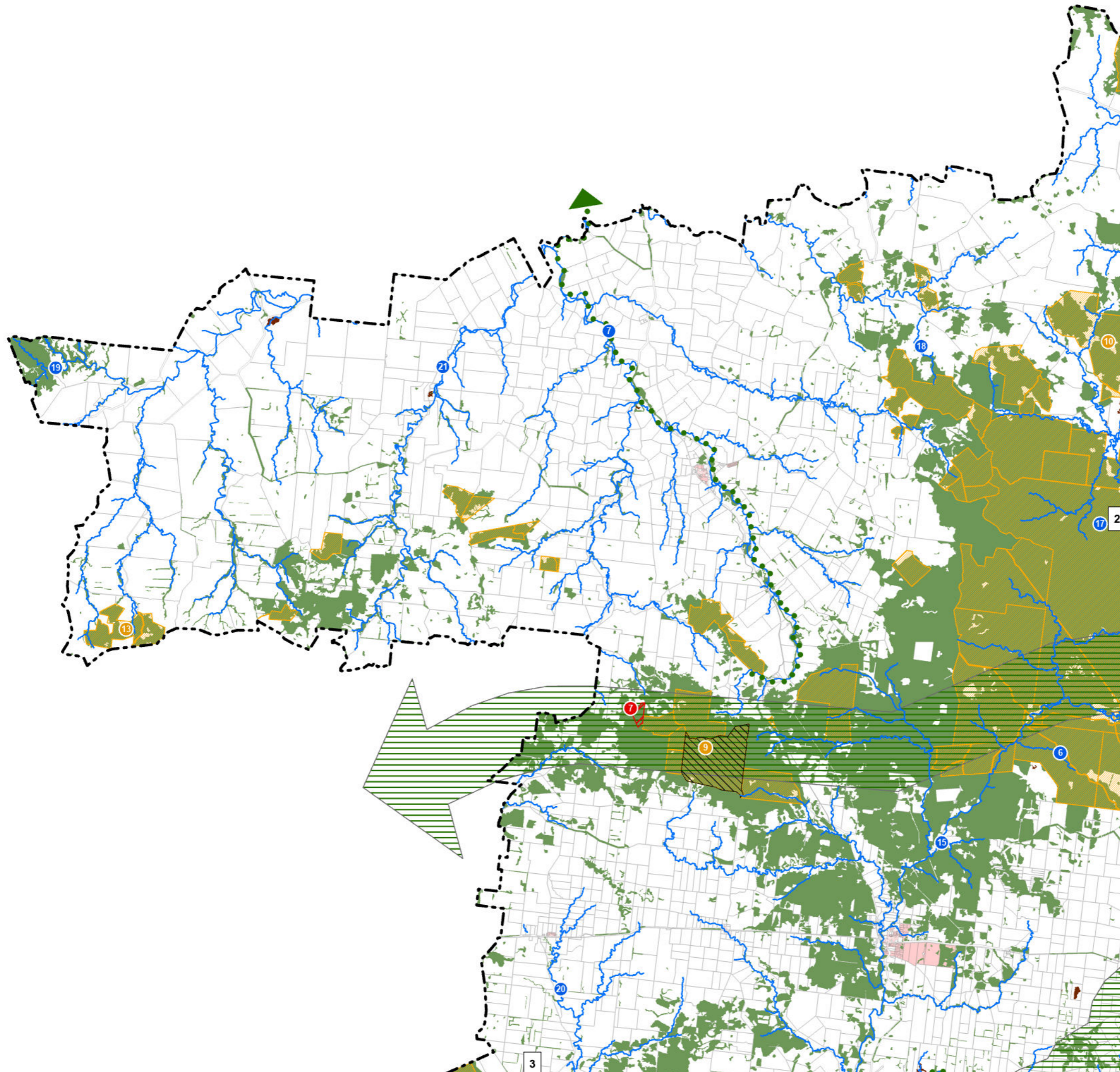
DATA SOURCES: WDRC, QSpatial
Cadastral Boundaries - May 2023 (© State of Queensland (Department of Resources) 2021)
MSES - May 2023 (© State of Queensland (Department of Environment and Science) 2023)

© Copyright Western Downs Regional Council 2023
Date Generated : 23/05/2023
Revision 3.0
Coordinate System: GDA 1994 MGA Zone 56



Legend

-  Significant Vegetation
-  Major Biodiversity Corridor
-  Minor Biodiversity Corridor
-  Protected Area
-  State Forest
-  Environmental Reserve
-  Wetland
-  Waterbody
-  Waterway
-  Wildflower Area
-  Urban Area
- General Information**
-  Council Boundary
-  Property Boundary



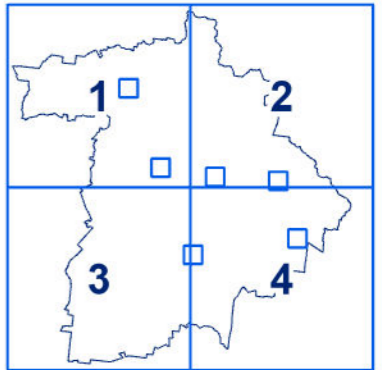
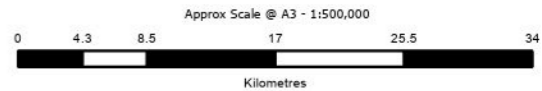
DRAFT

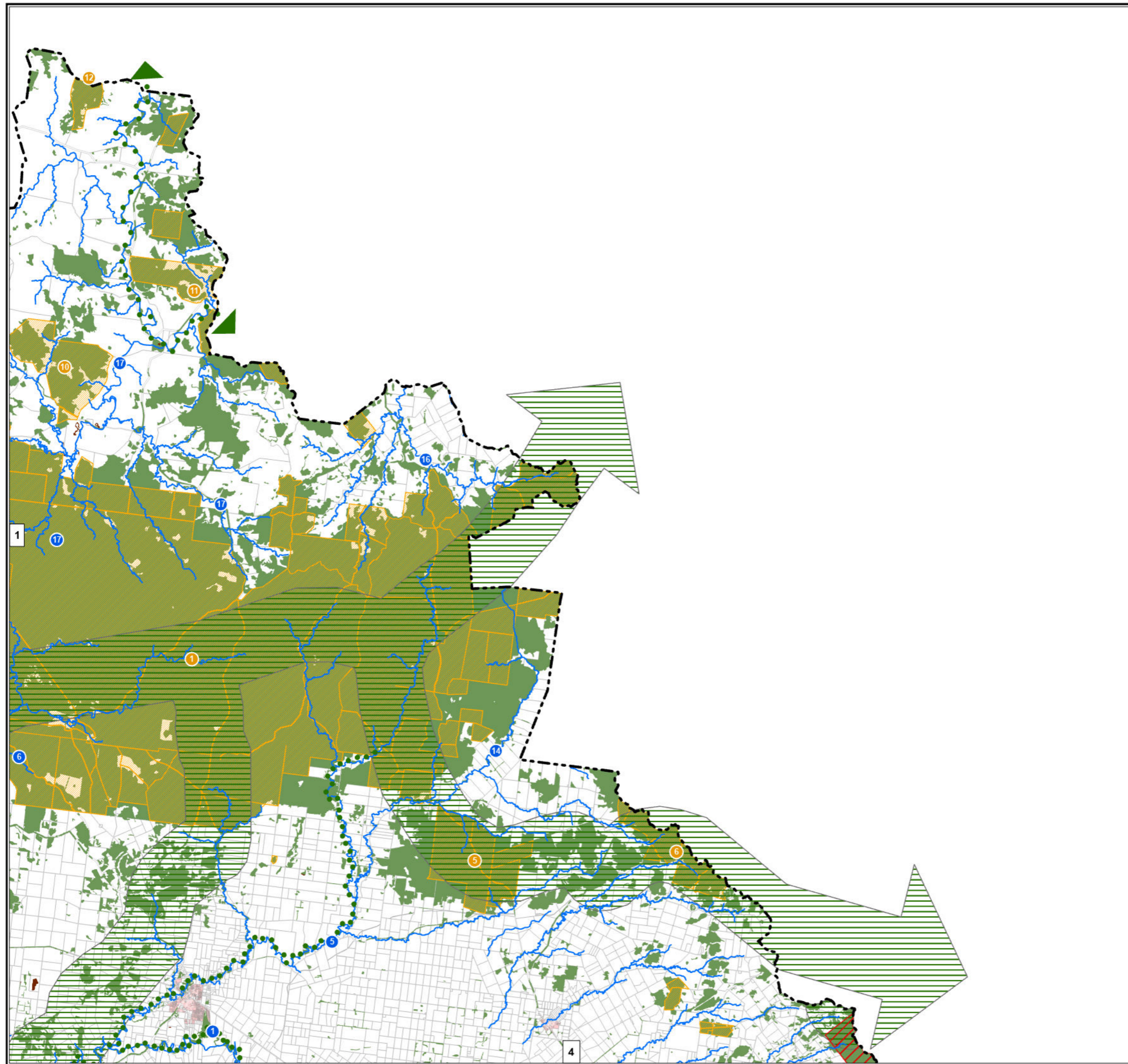
DISCLAIMER:
While every care is taken to ensure the accuracy of this product, the Western Downs Regional Council does not make any representations or warranties about its accuracy, reliability, completeness or suitability for any particular purpose and disclaims all responsibility and all liability (including without limitation, liability in negligence) for all expenses, losses, damages (including indirect or consequential damage) and costs that may occur as a result of the product being inaccurate or incomplete in any way or for any reason.

Base material reproduced with the permission of the Director-General, Department of Resources
© The State of Queensland (Department of Resources) [2023]

DATA SOURCES: WDR, QSpatial
Cadastral Boundaries - May 2023 (© State of Queensland (Department of Resources) 2021)
MSES - May 2023 (© State of Queensland (Department of Environment and Science) 2023)

© Copyright Western Downs Regional Council 2023
Date Generated : 23/05/2023
Revision 3.0
Coordinate System: GDA 1994 MGA Zone 56





Legend

- Significant Vegetation
 - Major Biodiversity Corridor
 - Minor Biodiversity Corridor
 - Protected Area
 - State Forest
 - Environmental Reserve
 - Wetland
 - Waterbody
 - Waterway
 - Wildflower Area
 - Urban Area
- General Information**
- Council Boundary
 - Property Boundary

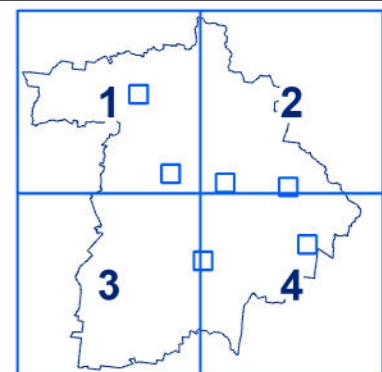
DRAFT

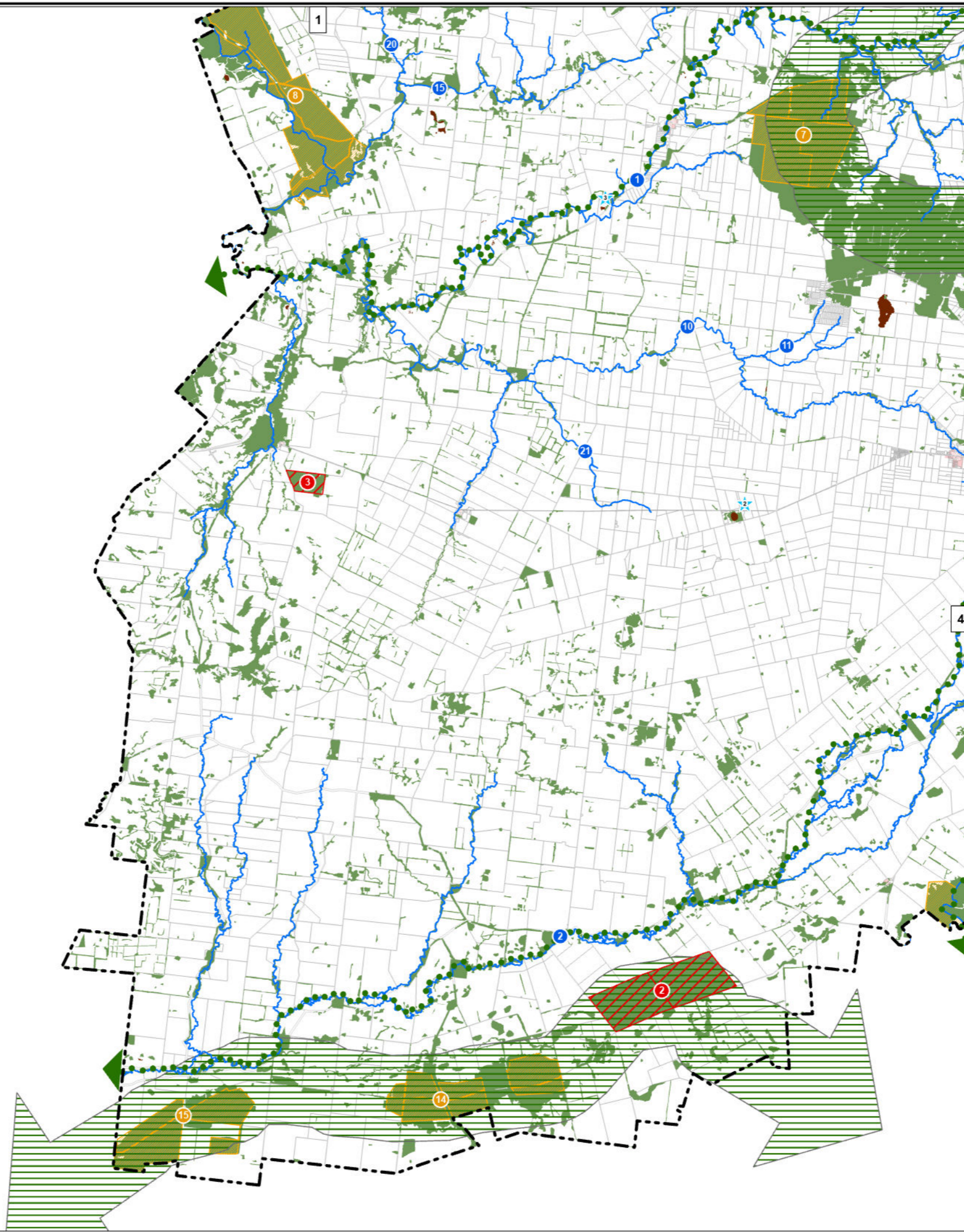
DISCLAIMER:
While every care is taken to ensure the accuracy of this product, the Western Downs Regional Council does not make any representations or warranties about its accuracy, reliability, completeness or suitability for any particular purpose and disclaims all responsibility and all liability (including without limitation, liability in negligence) for all expenses, losses, damages (including indirect or consequential damage) and costs that may occur as a result of the product being inaccurate or incomplete in any way or for any reason.

Base material reproduced with the permission of the Director-General, Department of Resources
© The State of Queensland (Department of Resources) [2023]

DATA SOURCES: WDR, QSpatial
Cadastral Boundaries - May 2023 (© State of Queensland (Department of Resources) 2021)
MSES - May 2023 (© State of Queensland (Department of Environment and Science) 2023)

© Copyright Western Downs Regional Council 2023
Date Generated : 23/05/2023
Revision 3.0
Coordinate System: GDA 1994 MGA Zone 56





Legend

- Significant Vegetation
- Major Biodiversity Corridor
- Minor Biodiversity Corridor
- Protected Area
- State Forest
- Environmental Reserve
- Wetland
- Waterbody
- Waterway
- Wildflower Area
- Urban Area

General Information

- Council Boundary
- Property Boundary

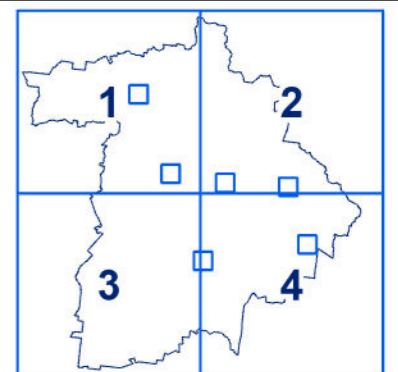
DRAFT

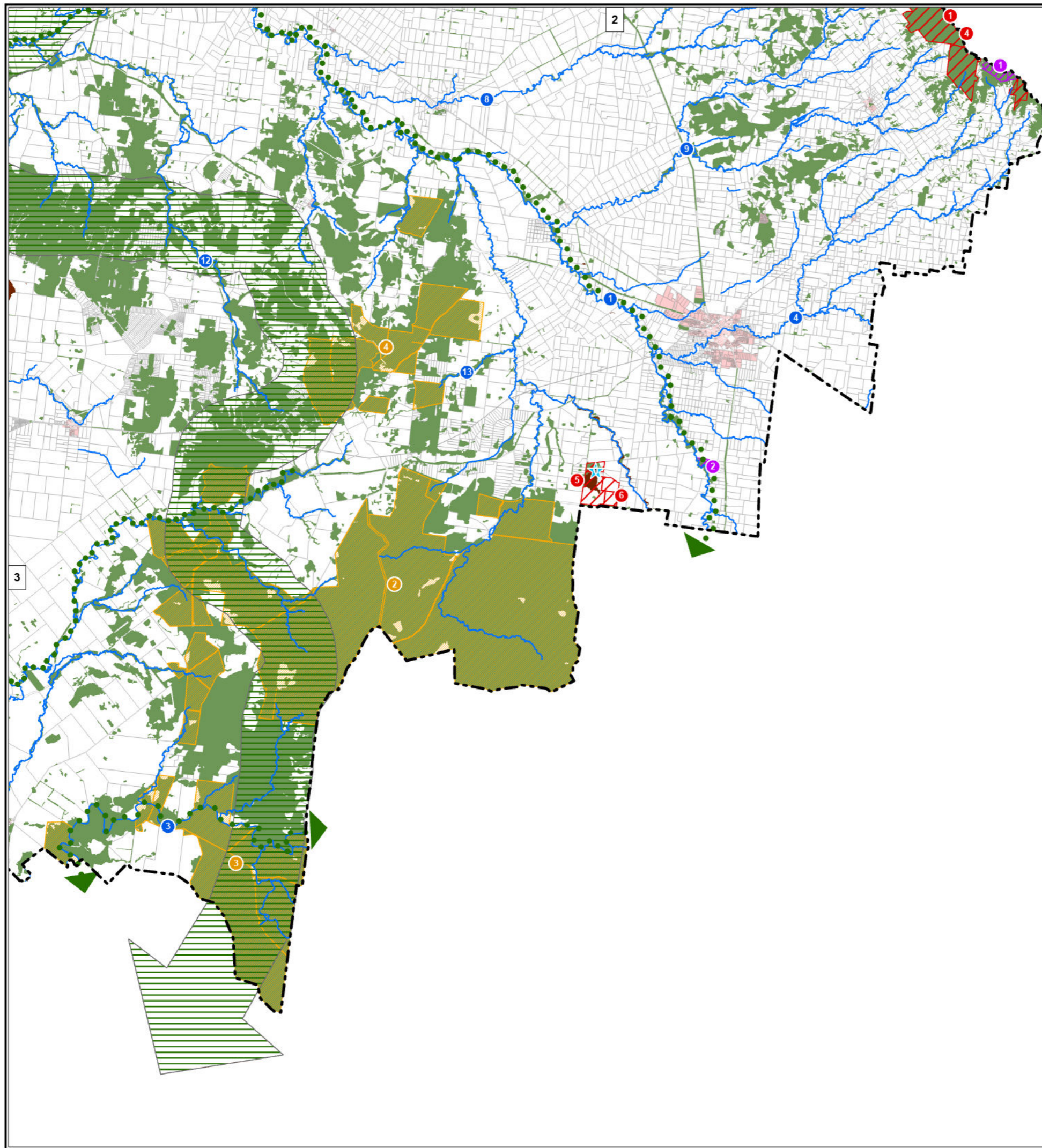
DISCLAIMER:
While every care is taken to ensure the accuracy of this product, the Western Downs Regional Council does not make any representations or warranties about its accuracy, reliability, completeness or suitability for any particular purpose and disclaims all responsibility and all liability (including without limitation, liability in negligence) for all expenses, losses, damages (including indirect or consequential damage) and costs that may occur as a result of the product being inaccurate or incomplete in any way or for any reason.

Base material reproduced with the permission of the Director-General, Department of Resources © The State of Queensland (Department of Resources) [2023]

DATA SOURCES: WDRRC, QSpatial
Cadastral Boundaries - May 2023 (© State of Queensland (Department of Resources) 2021)
MSES - May 2023 (© State of Queensland (Department of Environment and Science) 2023)

© Copyright Western Downs Regional Council 2023
Date Generated : 23/05/2023
Revision 3.0
Coordinate System: GDA 1994 MGA Zone 56





Legend

- Significant Vegetation
- Major Biodiversity Corridor
- Minor Biodiversity Corridor
- Protected Area
- State Forest
- Environmental Reserve
- Wetland
- Waterbody
- Waterway
- Wildflower Area
- Urban Area
- Council Boundary
- Property Boundary

General Information

DRAFT

DISCLAIMER:
While every care is taken to ensure the accuracy of this product, the Western Downs Regional Council does not make any representations or warranties about its accuracy, reliability, completeness or suitability for any particular purpose and disclaims all responsibility and all liability (including without limitation, liability in negligence) for all expenses, losses, damages (including indirect or consequential damage) and costs that may occur as a result of the product being inaccurate or incomplete in any way or for any reason.

Base material reproduced with the permission of the Director-General, Department of Resources
© The State of Queensland (Department of Resources) [2023]

DATA SOURCES: WDR, QSpatial
Cadastral Boundaries - May 2023 (© State of Queensland (Department of Resources) 2021)
MSES - May 2023 (© State of Queensland (Department of Environment and Science) 2023)

© Copyright Western Downs Regional Council 2023
Date Generated : 23/05/2023
Revision 3.0
Coordinate System: GDA 1994 MGA Zone 56

