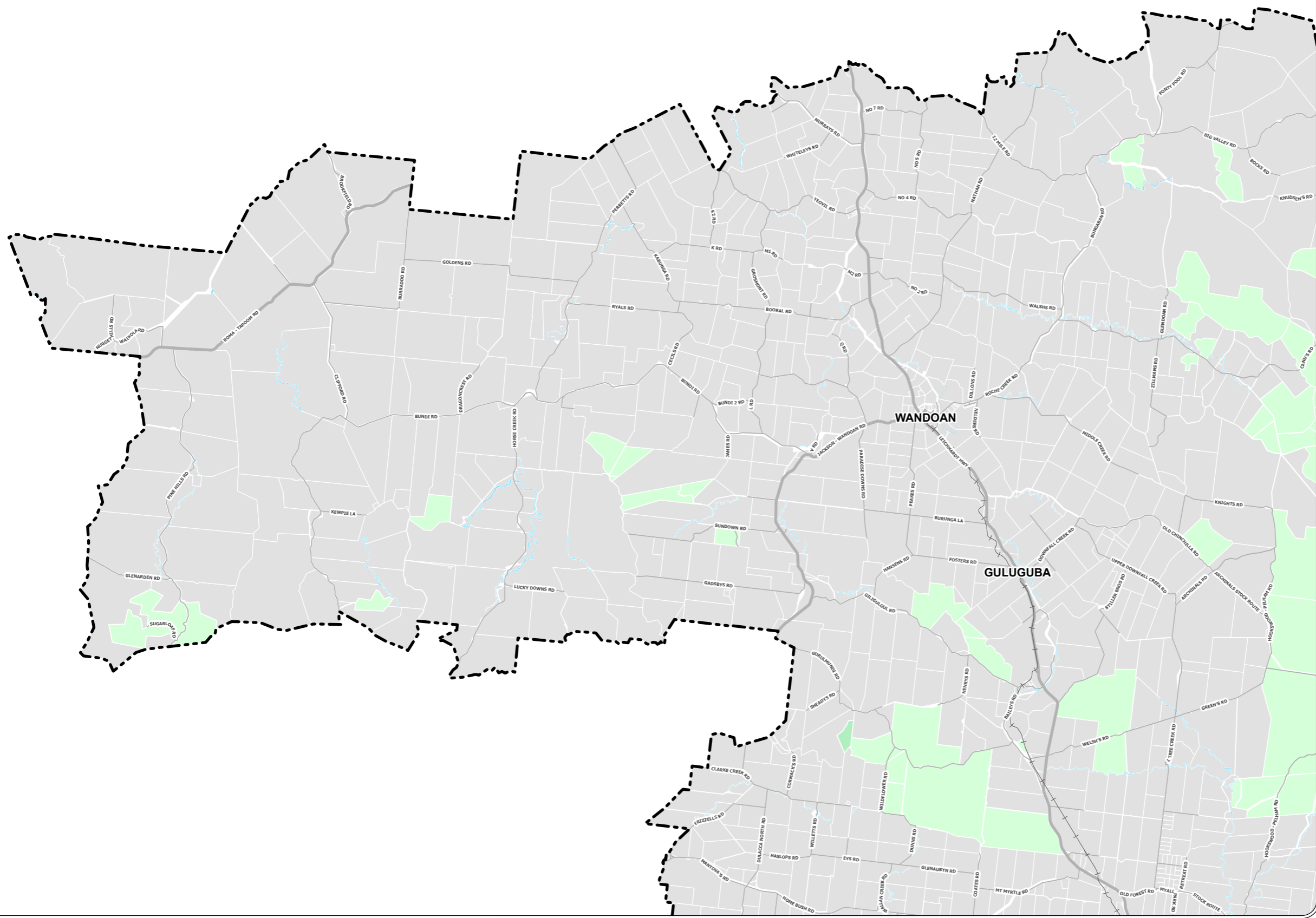




Legend

- State Roads
- Roads
- Railway
- Council Boundary
- Watercourses
- State Forest
- National Park
- Cadastre

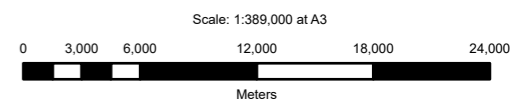


Western Downs Regional Council  
 (C) The State of Queensland  
 (C) CSIRO [2013]  
 Department of Natural Resources and Mines (DNRM) [2016]

DISCLAIMER: Users of the information recorded in this document (the Information) accept all responsibility and risk associated with the use of the Information and should seek professional advice in relation to dealings with property.

Despite Department of Natural Resources and Mines (DNRM)'s best efforts, DNRM makes no representations or warranties in relation to the Information, and, to the extent permitted by law, exclude or limit all warranties relating to correctness, accuracy, reliability, completeness or currency and all liability for any direct, indirect and consequential costs, losses, damages and expenses incurred in any way (including but not limited to that arising from negligence) in connection with any use of our reliance on the Information.

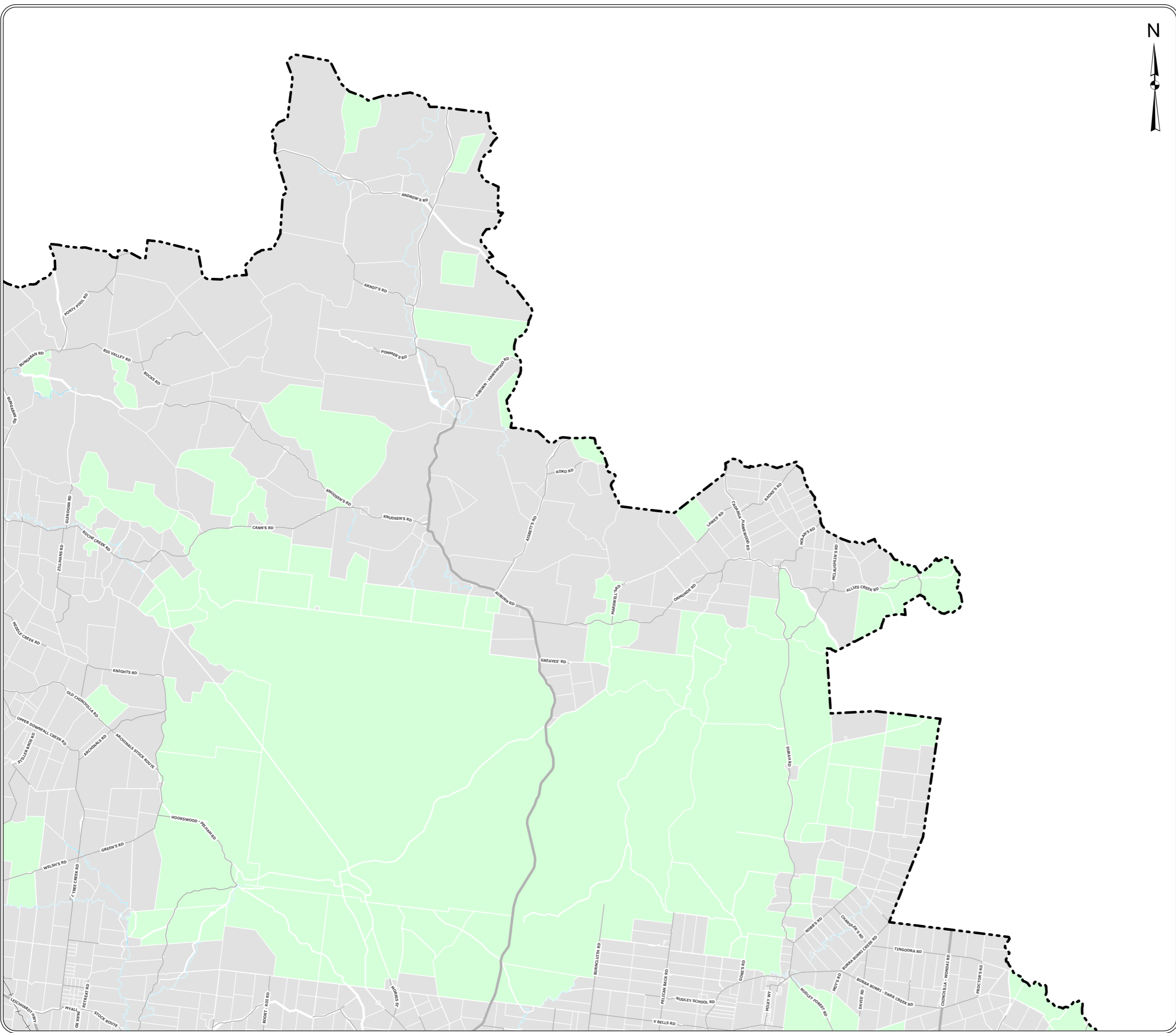
Date : 7/10/2022  
 Ref # : 20221007



Road Maps

District - Map 1 of 5

Western Downs Regional Council



**Legend**

- State Roads
- Roads
- Railway
- Council Boundary
- Watercourses
- State Forest
- Cadastre

**Western Downs Regional Council**  
 (C) The State of Queensland  
 (C) CSIRO [2013]  
 Department of Natural Resources and Mines (DNRM) [2016]

DISCLAIMER: Users of the information recorded in this document (the Information) accept all responsibility and risk associated with the use of the Information and should seek professional advice in relation to dealings with property.

Despite Department of Natural Resources and Mines (DNRM)'s best efforts, DNRM makes no representations or warranties in relation to the Information, and, to the extent permitted by law, exclude or limit all warranties relating to correctness, accuracy, reliability, completeness or currency and all liability for any direct, indirect and consequential costs, losses, damages and expenses incurred in any way (including but not limited to that arising from negligence) in connection with any use of our reliance on the Information.

Date : 7/10/2022  
 Ref # : 20221007

Scale: 1:389,000 at A3

Meters



**Legend**

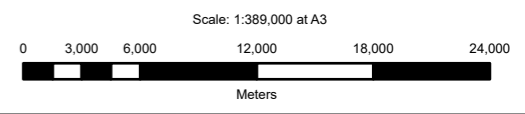
- National Highway
- State Roads
- Roads
- Railway
- ⬡ Council Boundary
- Watercourses
- State Forest
- National Park
- Cadastre

**Western Downs Regional Council**  
**(C) The State of Queensland**  
**(C) CSIRO [2013]**  
**Department of Natural Resources and Mines (DNRM) [2016]**

DISCLAIMER: Users of the information recorded in this document (the Information) accept all responsibility and risk associated with the use of the Information and should seek professional advice in relation to dealings with property.

Despite Department of Natural Resources and Mines (DNRM)'s best efforts, DNRM makes no representations or warranties in relation to the Information, and, to the extent permitted by law, exclude or limit all warranties relating to correctness, accuracy, reliability, completeness or currency and all liability for any direct, indirect and consequential costs, losses, damages and expenses incurred in any way (including but not limited to that arising from negligence) in connection with any use of our reliance on the Information.

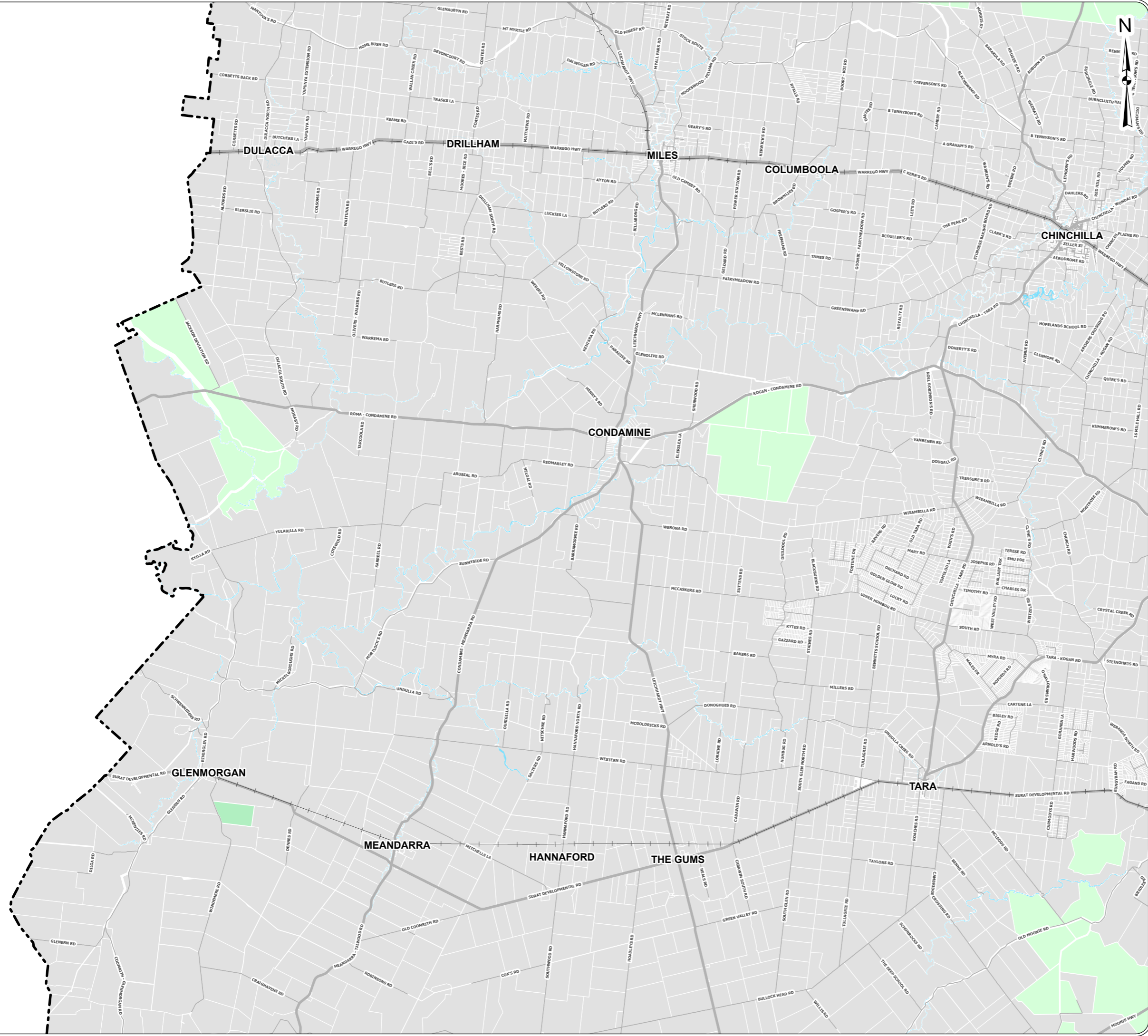
Date : 7/10/2022  
Ref # : 20221007



**Road Maps**

**District - Map 3 of 5**

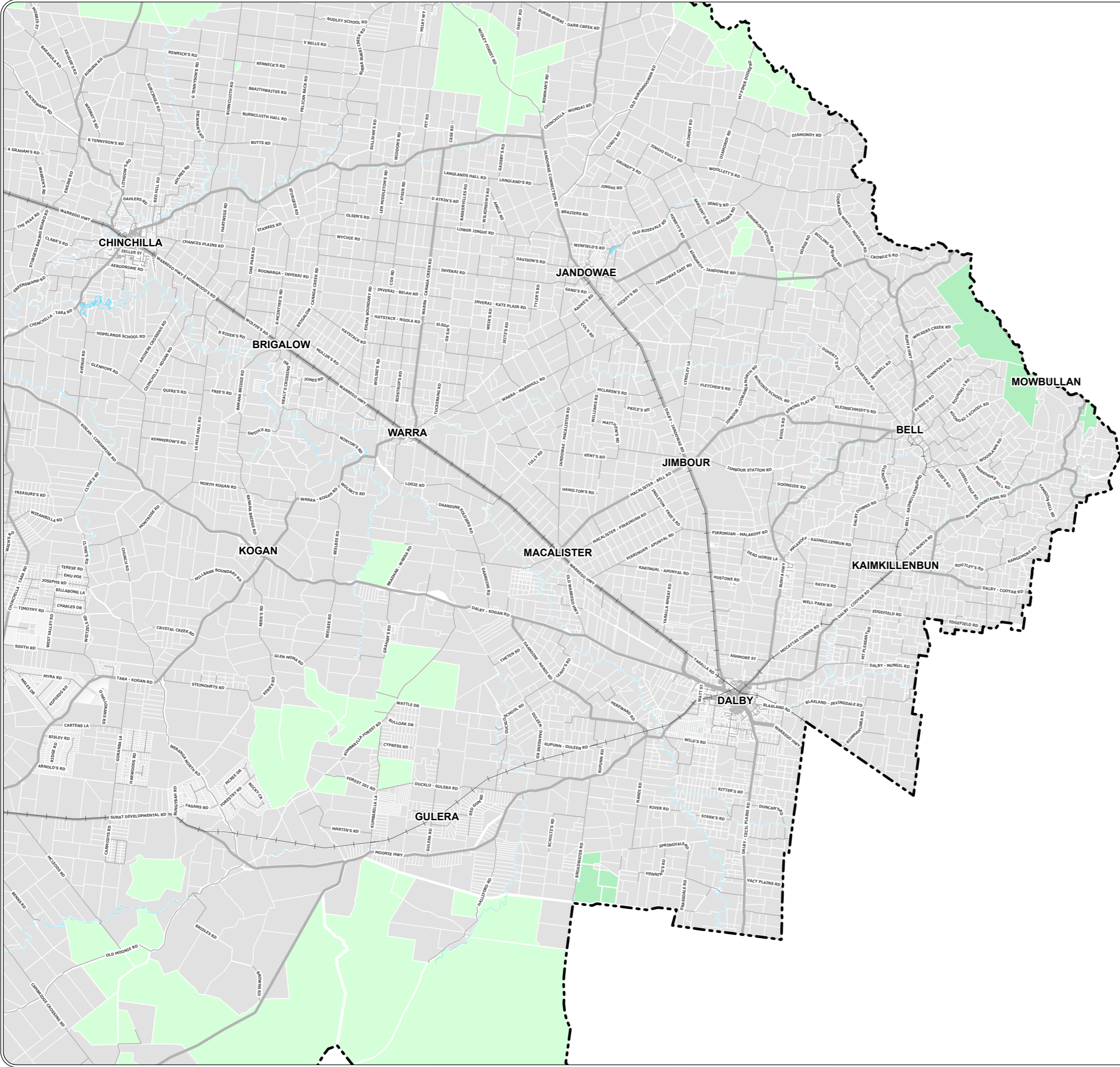
**Western Downs Regional Council**





Legend

- National Highway
- State Roads
- Roads
- Railway
- Council Boundary
- Watercourses
- State Forest
- National Park
- Cadastre



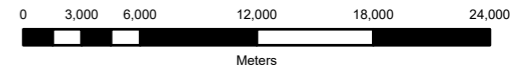
Western Downs Regional Council  
 (C) The State of Queensland  
 (C) CSIRO [2013]  
 Department of Natural Resources and Mines (DNRM) [2016]

DISCLAIMER: Users of the information recorded in this document (the Information) accept all responsibility and risk associated with the use of the Information and should seek professional advice in relation to dealings with property.

Despite Department of Natural Resources and Mines (DNRM)'s best efforts, DNRM makes no representations or warranties in relation to the Information, and, to the extent permitted by law, exclude or limit all warranties relating to correctness, accuracy, reliability, completeness or currency and all liability for any direct, indirect and consequential costs, losses, damages and expenses incurred in any way (including but not limited to that arising from negligence) in connection with any use of our reliance on the Information.

Date : 7/10/2022  
 Ref # : 20221007

Scale: 1:389,000 at A3



Road Maps

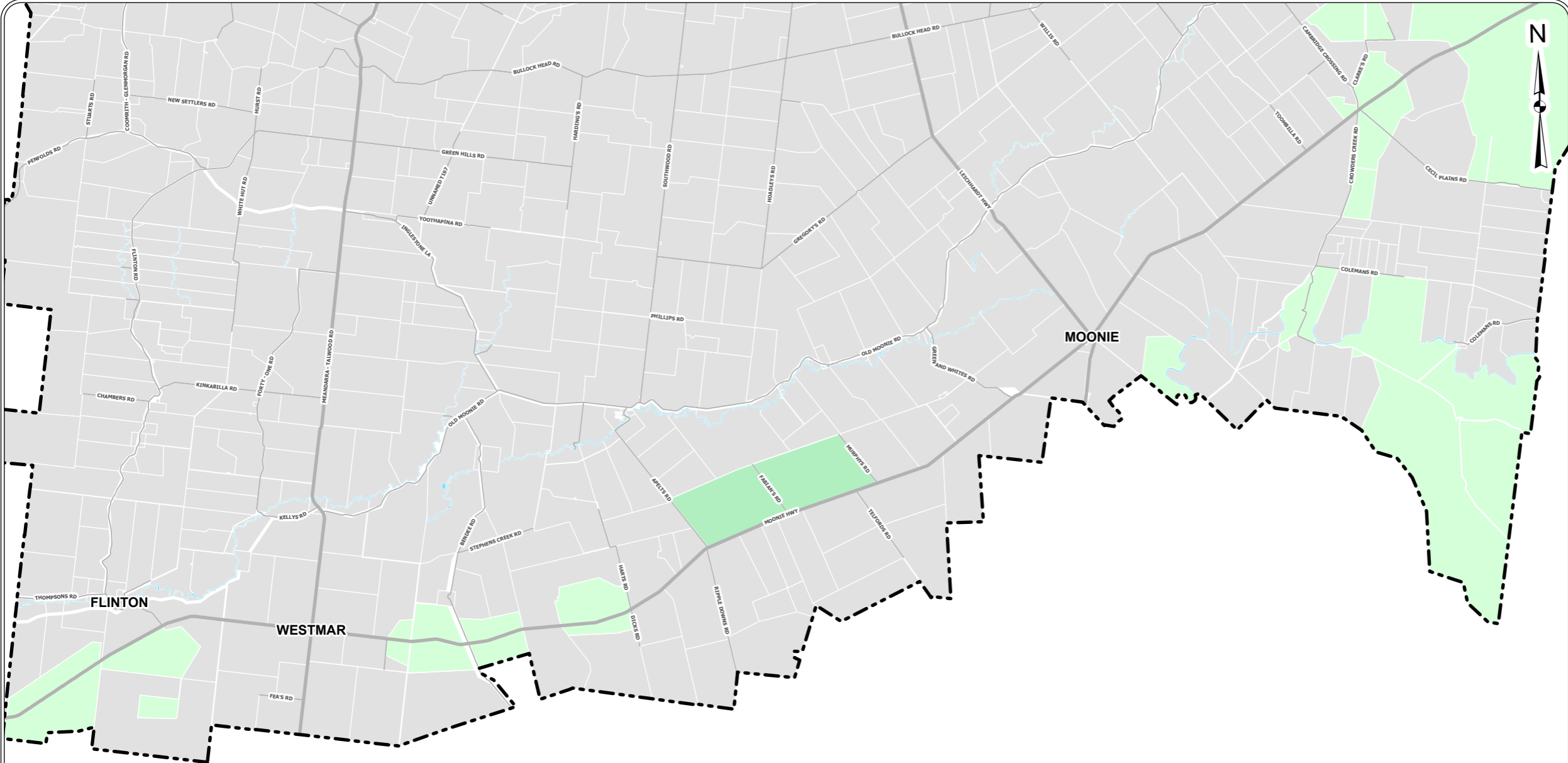
District - Map 4 of 5

Western Downs Regional Council



**Legend**

- State Roads
- Roads
- - - Council Boundary
- Watercourses
- State Forest
- National Park
- Cadastre



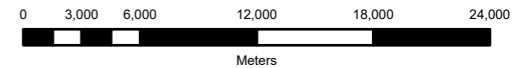
**Western Downs Regional Council**  
(C) The State of Queensland  
(C) CSIRO [2013]  
Department of Natural Resources and Mines (DNRM) [2016]

DISCLAIMER: Users of the information recorded in this document (the Information) accept all responsibility and risk associated with the use of the Information and should seek professional advice in relation to dealings with property.

Despite Department of Natural Resources and Mines (DNRM)'s best efforts, DNRM makes no representations or warranties in relation to the Information, and, to the extent permitted by law, exclude or limit all warranties relating to correctness, accuracy, reliability, completeness or currency and all liability for any direct, indirect and consequential costs, losses, damages and expenses incurred in any way (including but not limited to that arising from negligence) in connection with any use of our reliance on the Information.

Date : 7/10/2022  
Ref # : 20221007

Scale: 1:389,000 at A3



**Road Maps**

**District - Map 5 of 5**

**Western Downs Regional Council**