

**REGISTER OF THE NATIONAL ESTATE**

(1) Wajee Area, (2) Barakula State Forest, (3) Cadarga Creek Area, (4) Chinchilla Sands Local Fossil Fauna Site, (5) Boonarga Cactoblastis Memorial Hall, (6) Inverai Road Environmental Park, (7) Club Hotel, (8) Bunya Mountains National Park, (9) Russell Park, (10) Jimbour Station Homestead, (11) Dalby/Jandowae Roadside Remnant Grassland, (12) Dalby Radio Tower Remnant Grassland, (13) Dalby War Memorial and Memorial Park, (14) Dalby Cecil Plains Roadside Remnant Dichanthium Sericeum Site, (15) Lake Broadwater Environmental Park, (16) Southwood National Park, and (17) Myall Park Botanic Garden

**QUEENSLAND HERITAGE REGISTER**

(18) Chinchilla 'Digger' Statue, (19) Cactoblastis Memorial Hall, (20) Jimbour Dry Stone Wall, (21) Jimbour House, (22) St John's Anglican Church, (23) Former Dalby Town Council Chambers and Offices, (24) Dalby Swimming Pool Complex, (25) Dalby War Memorial and Gates, (26) Dalby Fire Station, (27) St Columba's Convent (former), (28) Dalby State High School, and (29) Waaje Fire Tower No.4

**KNOWN CEMETERIES AND BURIAL SITES**

(30) 3 on NT372, (31) 1 on NT258, (32)13 on NT287, (33) 41 on NT32, (34) 70 on FTY490, (35) 1 on RP152834, (36) 197 on LY793. (37) 3 on SP121405. (38) 259 on C8188, (39) 45A342008, (40)31 on LY379, (41) 150 on DY625, (42)68 on LY1053, (43) 185 on LY431, (44) 260 on LY231. (45)18 on SP156049, (46) 188 on C24373, (47) 83 on LY566, (48) 88R0G3422, (49)8 on C4423, (50) 123 on BWR613, (51) 139 on BWR297, (52) 107 on BWR424, (53) 54 on FT158, (55) 1 on RP880173, and (55) 133 on FT617

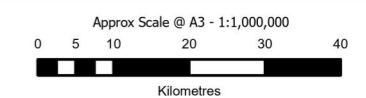
**DRAFT**

**DISCLAIMER:**  
While every care is taken to ensure the accuracy of this product, the Western Downs Regional Council does not make any representations or warranties about its accuracy, reliability, completeness or suitability for any particular purpose and disclaims all responsibility and all liability (including without limitation, liability in negligence) for all expenses, losses, damages (including indirect or consequential damage) and costs that may occur as a result of the product being inaccurate or incomplete in any way or for any reason.

Base material reproduced with the permission of the Director-General, Department of Resources © The State of Queensland (Department of Resources) [2023]

**DATA SOURCES:** WDR, QSpatial  
Cadastral Boundaries - May 2023 © State of Queensland (Department of Resources) 2021  
State Heritage - May 2023 © State of Queensland (Department of Environment and Science) 2023

© Copyright Western Downs Regional Council 2023  
Date Generated : 23/05/2023  
Revision 3.0  
Coordinate System: GDA 1994 MGA Zone 56



Legend

- Forested Uplands
- Grazed Uplands
- Forested & Woodland Downs
- Open Downs
- High Landscape Value Areas
- Mountain Peaks
- Scenic Routes
- Airport Enterprise Area
- Landing Ground
- Waterbody
- Significant Waterway Crossing
- Register of National Estate
- Queensland Health Register
- Known Cemeteries and Burial Sites

General Information

- Council Boundary
- Cadastre
- Main Roads
- Railway Network
- Waterways

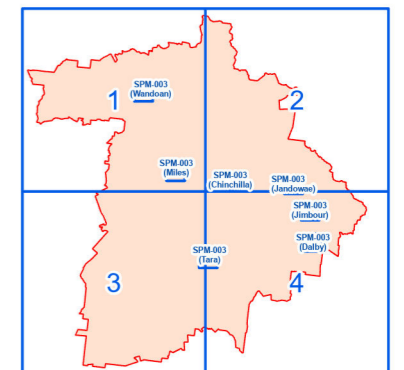
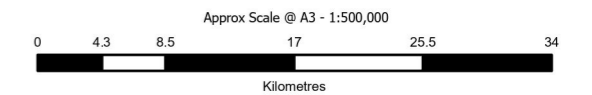
DRAFT

**DISCLAIMER:**  
While every care is taken to ensure the accuracy of this product, the Western Downs Regional Council does not make any representations or warranties about its accuracy, reliability, completeness or suitability for any particular purpose and disclaims all responsibility and all liability (including without limitation, liability in negligence) for all expenses, losses, damages (including indirect or consequential damage) and costs that may occur as a result of the product being inaccurate or incomplete in any way or for any reason.

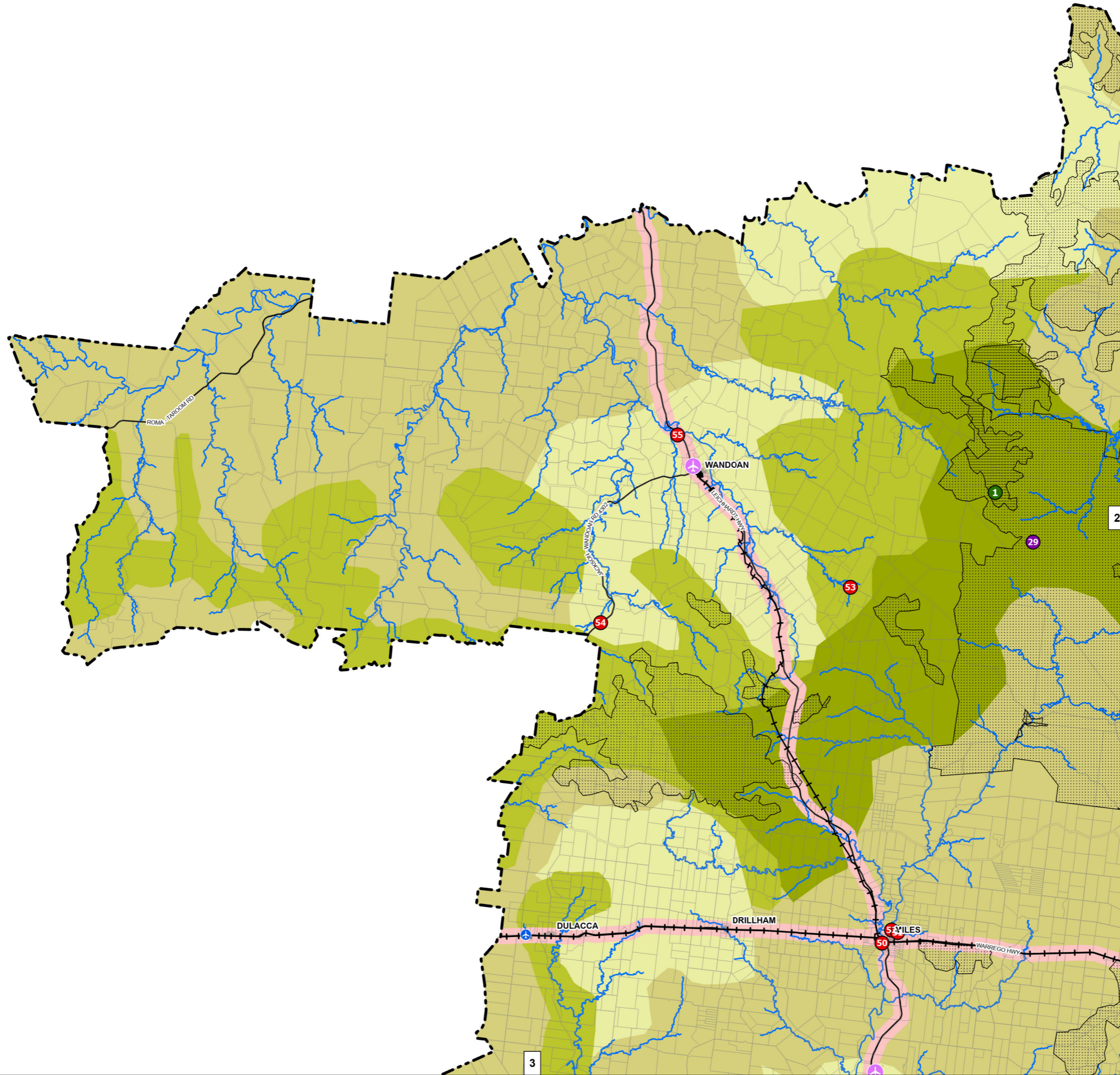
Base material reproduced with the permission of the Director-General, Department of Resources © The State of Queensland (Department of Resources) [2023]

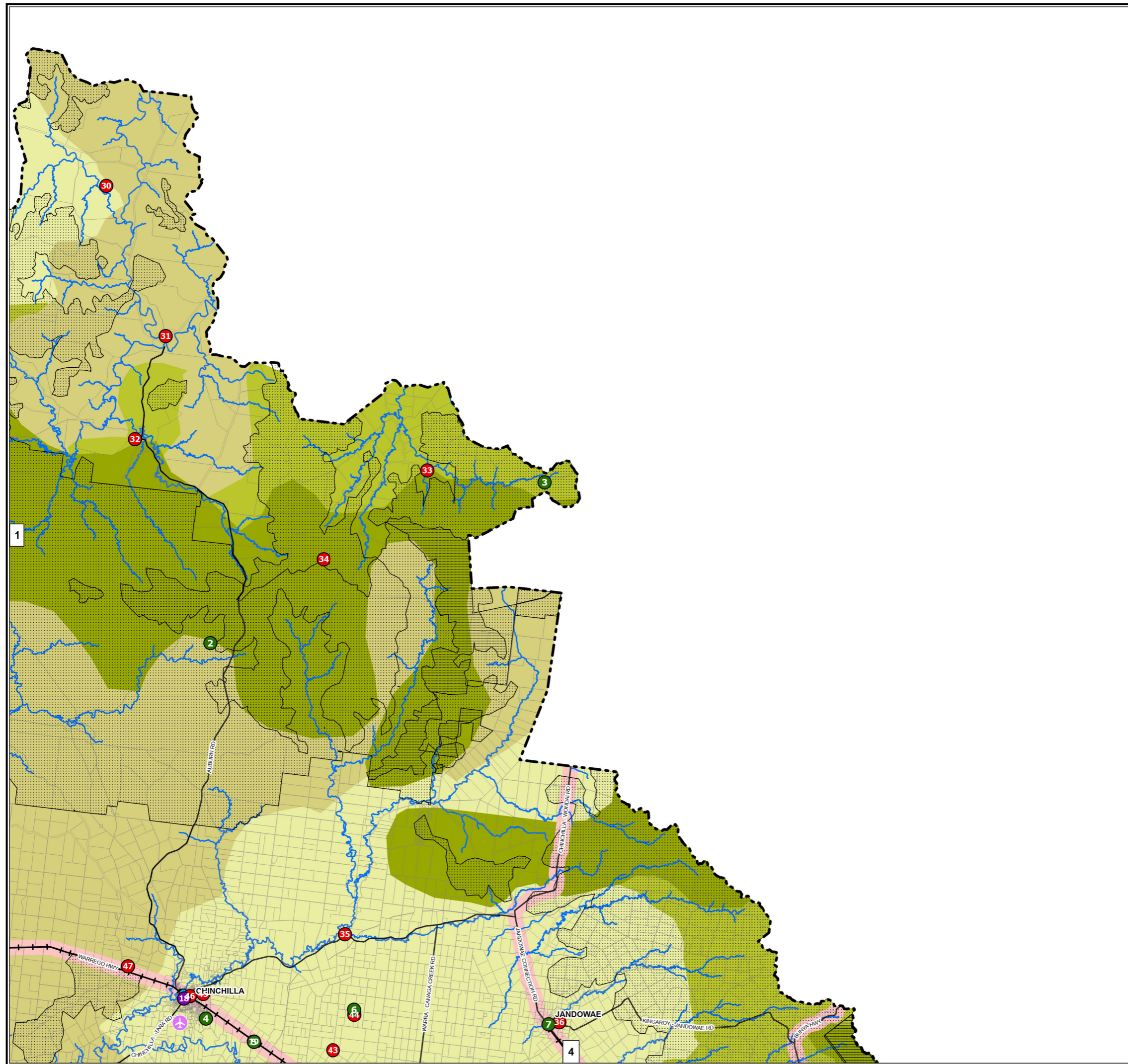
**DATA SOURCES:** WDRC, QSpatial  
Cadastral Boundaries - May 2023 (© State of Queensland (Department of Resources) 2021)  
State Heritage - May 2023 (© State of Queensland (Department of Environment and Science) 2023)

© Copyright Western Downs Regional Council 2023  
Date Generated : 23/05/2023  
Revision 3.0  
Coordinate System: GDA 1994 MGA Zone 56



SPM-003.1





**Legend**

- Forested Uplands
- Grazed Uplands
- Forested & Woodland Downs
- Open Downs
- High Landscape Value Areas
- Mountain Peaks
- Scenic Routes
- Airport Enterprise Area
- Landing Ground
- Waterbody
- Significant Waterway Crossing
- Register of National Estate
- Queensland Health Register
- Known Cemeteries and Burial Sites

**General Information**

- Council Boundary
- Cadastre
- Main Roads
- Railway Network
- Waterways

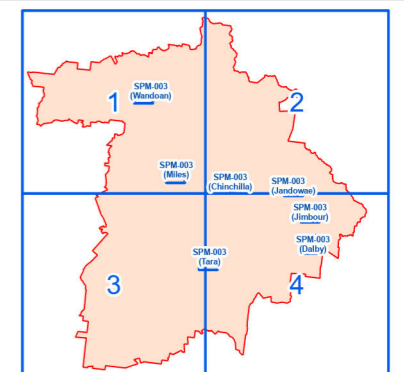
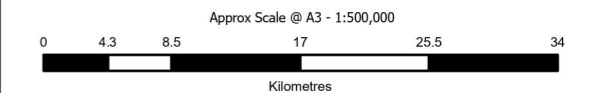
**DRAFT**

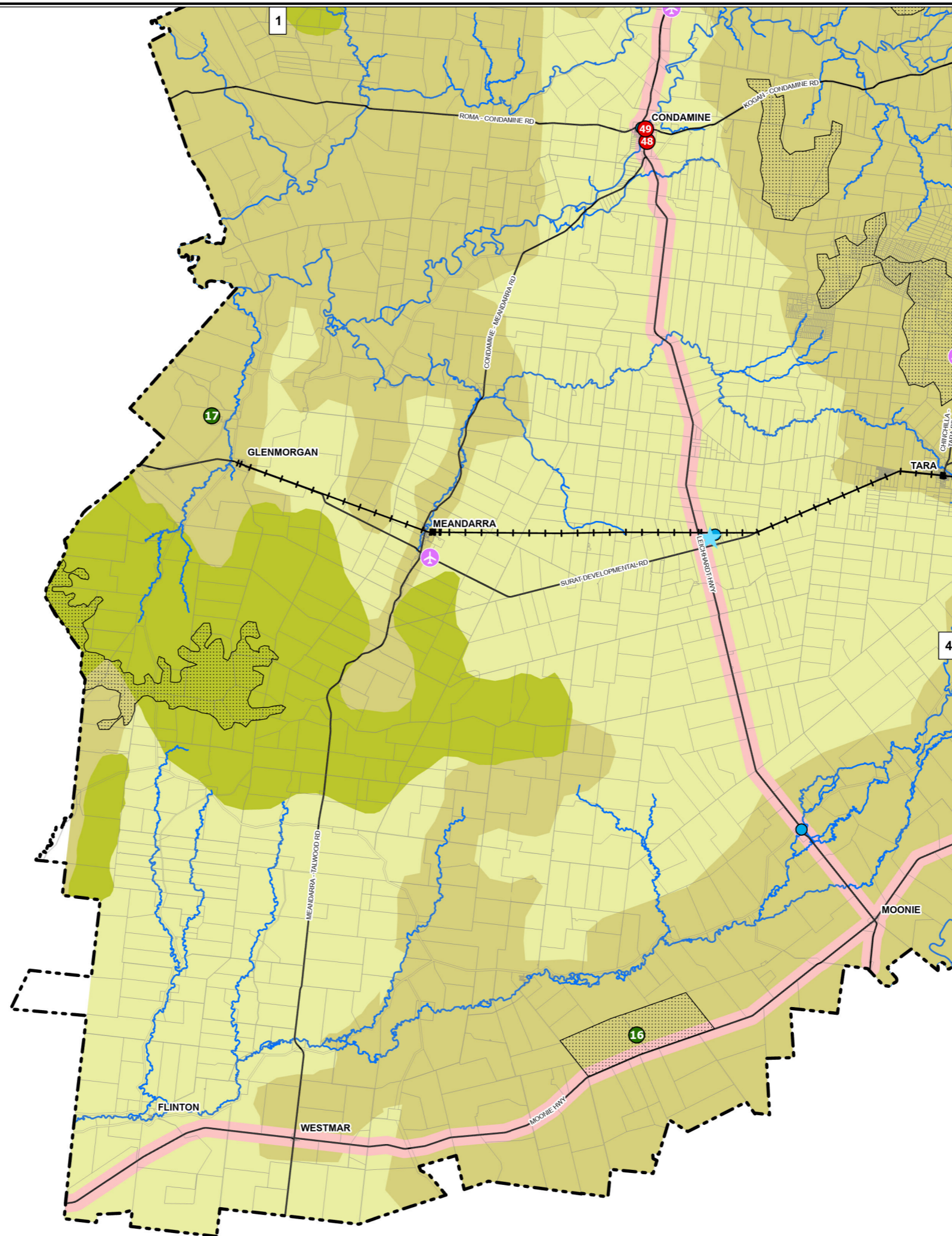
**DISCLAIMER:**  
While every care is taken to ensure the accuracy of this product, the Western Downs Regional Council does not make any representations or warranties about its accuracy, reliability, completeness or suitability for any particular purpose and disclaims all responsibility and all liability (including without limitation, liability in negligence) for all expenses, losses, damages (including indirect or consequential damage) and costs that may occur as a result of the product being inaccurate or incomplete in any way or for any reason.

Base material reproduced with the permission of the Director-General, Department of Resources © The State of Queensland (Department of Resources) [2023]

**DATA SOURCES:** WDRC, QSpatial  
Cadastral Boundaries - May 2023 (© State of Queensland (Department of Resources) 2021)  
State Heritage - May 2023 (© State of Queensland (Department of Environment and Science) 2023)

© Copyright Western Downs Regional Council 2023  
Date Generated : 23/05/2023  
Revision 3.0  
Coordinate System: GDA 1994 MGA Zone 56





Legend

- Grazed Uplands
- Forested & Woodland Downs
- Open Downs
- High Landscape Value Areas
- Mountain Peaks
- Scenic Routes
- Airport Enterprise Area
- Landing Ground
- Waterbody
- Significant Waterway Crossing
- Register of National Estate
- Queensland Health Register
- Known Cemeteries and Burial Sites

General Information

- Council Boundary
- Cadastral
- Main Roads
- Railway Network
- Waterways

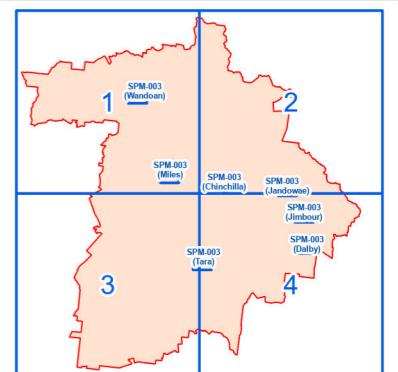
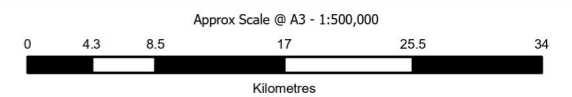
DRAFT

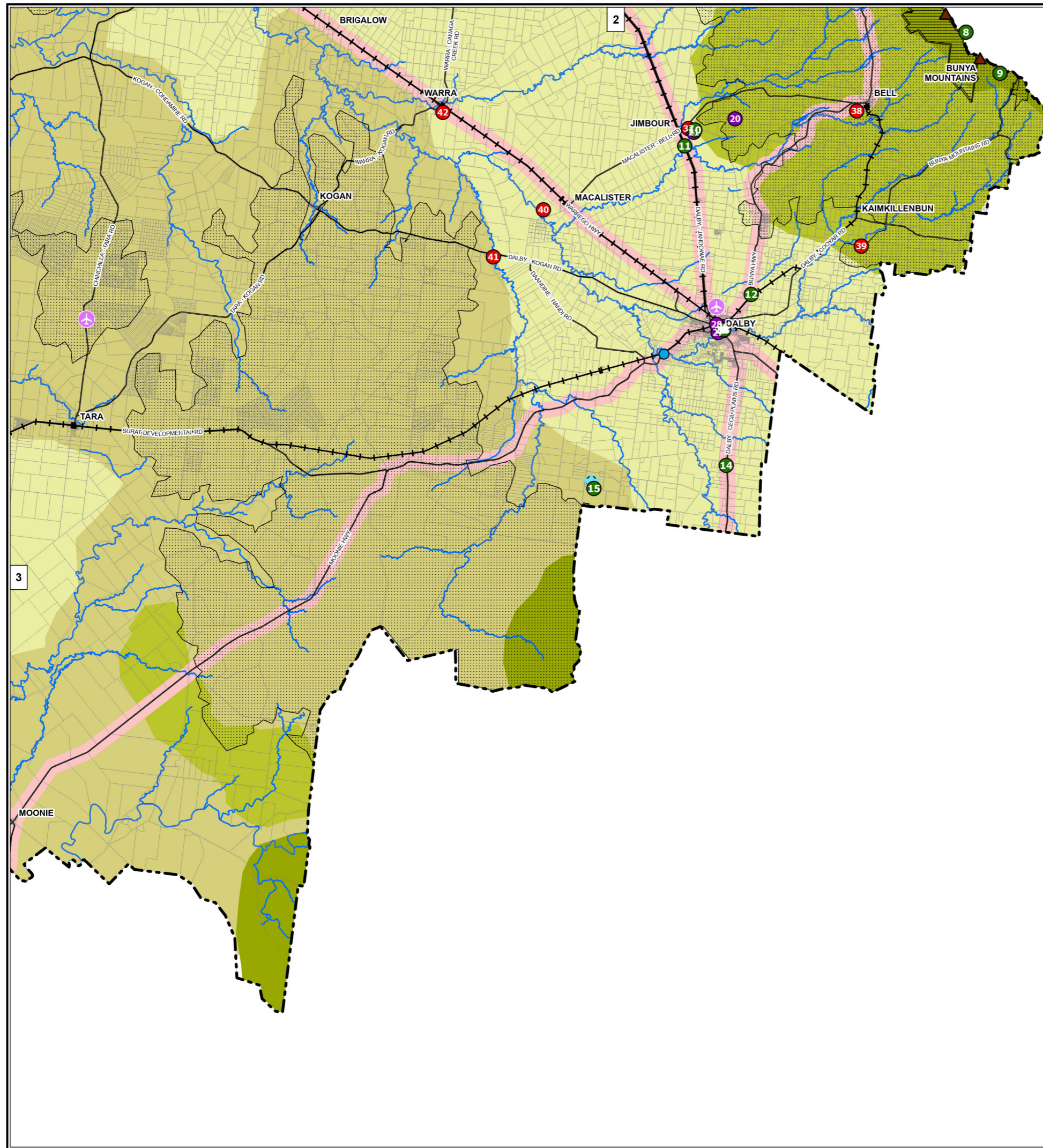
**DISCLAIMER:**  
While every care is taken to ensure the accuracy of this product, the Western Downs Regional Council does not make any representations or warranties about its accuracy, reliability, completeness or suitability for any particular purpose and disclaims all responsibility and all liability (including without limitation, liability in negligence) for all expenses, losses, damages (including indirect or consequential damage) and costs that may occur as a result of the product being inaccurate or incomplete in any way or for any reason.

Base material reproduced with the permission of the Director-General, Department of Resources © The State of Queensland (Department of Resources) [2023]

**DATA SOURCES:** WDRC, QSpatial  
Cadastral Boundaries - May 2023 (© State of Queensland (Department of Resources) 2021)  
State Heritage - May 2023 (© State of Queensland (Department of Environment and Science) 2023)

© Copyright Western Downs Regional Council 2023  
Date Generated : 23/05/2023  
Revision 3.0  
Coordinate System: GDA 1994 MGA Zone 56





**Legend**

- Forested Uplands
- Grazed Uplands
- Forested & Woodland Downs
- Open Downs
- High Landscape Value Areas
- Mountain Peaks
- Scenic Routes
- Airport Enterprise Area
- Landing Ground
- Waterbody
- Significant Waterway Crossing
- Register of National Estate
- Queensland Health Register
- Known Cemeteries and Burial Sites

**General Information**

- Council Boundary
- Cadastre
- Main Roads
- Railway Network
- Waterways

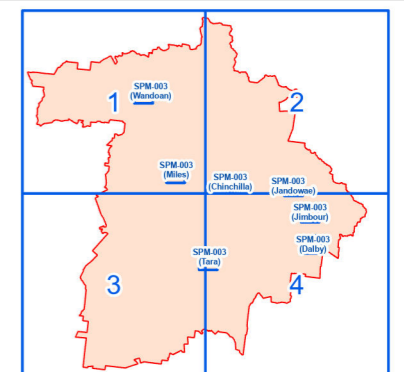
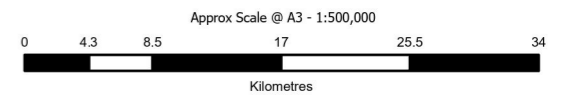
**DRAFT**

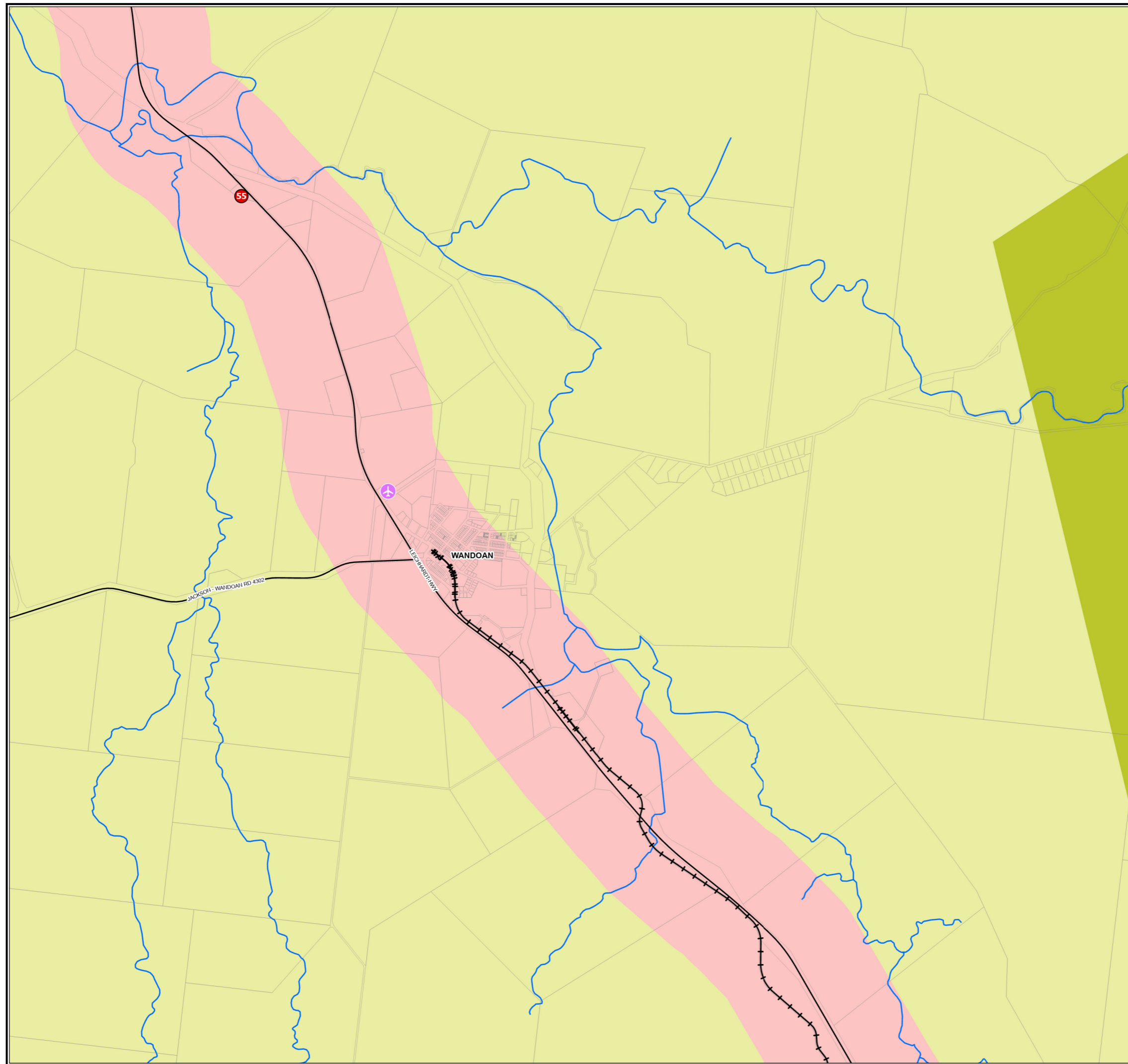
**DISCLAIMER:**  
 While every care is taken to ensure the accuracy of this product, the Western Downs Regional Council does not make any representations or warranties about its accuracy, reliability, completeness or suitability for any particular purpose and disclaims all responsibility and all liability (including without limitation, liability in negligence) for all expenses, losses, damages (including indirect or consequential damage) and costs that may occur as a result of the product being inaccurate or incomplete in any way or for any reason.

Base material reproduced with the permission of the Director-General, Department of Resources © The State of Queensland (Department of Resources) [2023]

**DATA SOURCES:** WDRC, QSpatial  
 Cadastral Boundaries - May 2023 (© State of Queensland (Department of Resources) 2021)  
 State Heritage - May 2023 (© State of Queensland (Department of Environment and Science) 2023)

© Copyright Western Downs Regional Council 2023  
 Date Generated : 23/05/2023  
 Revision 3.0  
 Coordinate System: GDA 1994 MGA Zone 56





Legend

- Grazed Uplands
- Open Downs
- High Landscape Value Areas
- Mountain Peaks
- Scenic Routes
- Airport Enterprise Area
- Landing Ground
- Waterbody
- Significant Waterway Crossing
- Register of National Estate
- Queensland Health Register
- Known Cemeteries and Burial Sites

General Information

- Council Boundary
- Cadastre
- Main Roads
- Railway Network
- Waterways

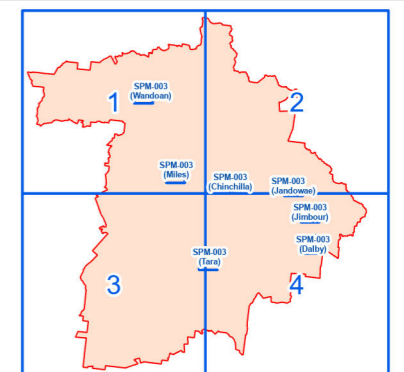
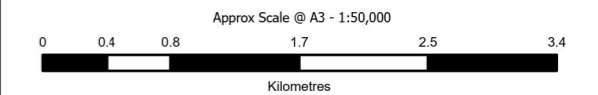
**DRAFT**

**DISCLAIMER:**  
While every care is taken to ensure the accuracy of this product, the Western Downs Regional Council does not make any representations or warranties about its accuracy, reliability, completeness or suitability for any particular purpose and disclaims all responsibility and all liability (including without limitation, liability in negligence) for all expenses, losses, damages (including indirect or consequential damage) and costs that may occur as a result of the product being inaccurate or incomplete in any way or for any reason.

Base material reproduced with the permission of the Director-General, Department of Resources © The State of Queensland (Department of Resources) [2023]

**DATA SOURCES:** WDRC, QSpatial  
Cadastral Boundaries - May 2023 (© State of Queensland (Department of Resources) 2021)  
State Heritage - May 2023 (© State of Queensland (Department of Environment and Science) 2023)

© Copyright Western Downs Regional Council 2023  
Date Generated : 23/05/2023  
Revision 3.0  
Coordinate System: GDA 1994 MGA Zone 56



SPM-003 (Wandoan)

Legend

- Forested & Woodland Downs
- High Landscape Value Areas
- Mountain Peaks
- Scenic Routes
- Airport Enterprise Area
- Landing Ground
- Waterbody
- Significant Waterway Crossing
- Register of National Estate
- Queensland Health Register
- Known Cemeteries and Burial Sites

General Information

- Council Boundary
- Cadastre
- Main Roads
- Railway Network
- Waterways

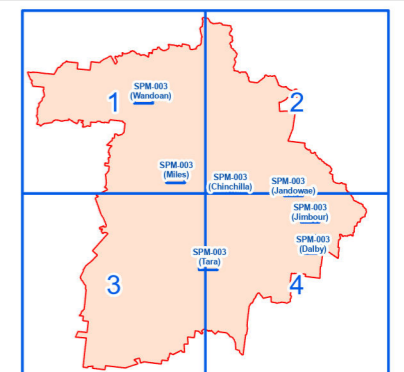
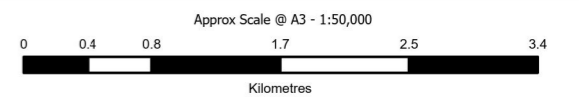
DRAFT

**DISCLAIMER:**  
While every care is taken to ensure the accuracy of this product, the Western Downs Regional Council does not make any representations or warranties about its accuracy, reliability, completeness or suitability for any particular purpose and disclaims all responsibility and all liability (including without limitation, liability in negligence) for all expenses, losses, damages (including indirect or consequential damage) and costs that may occur as a result of the product being inaccurate or incomplete in any way or for any reason.

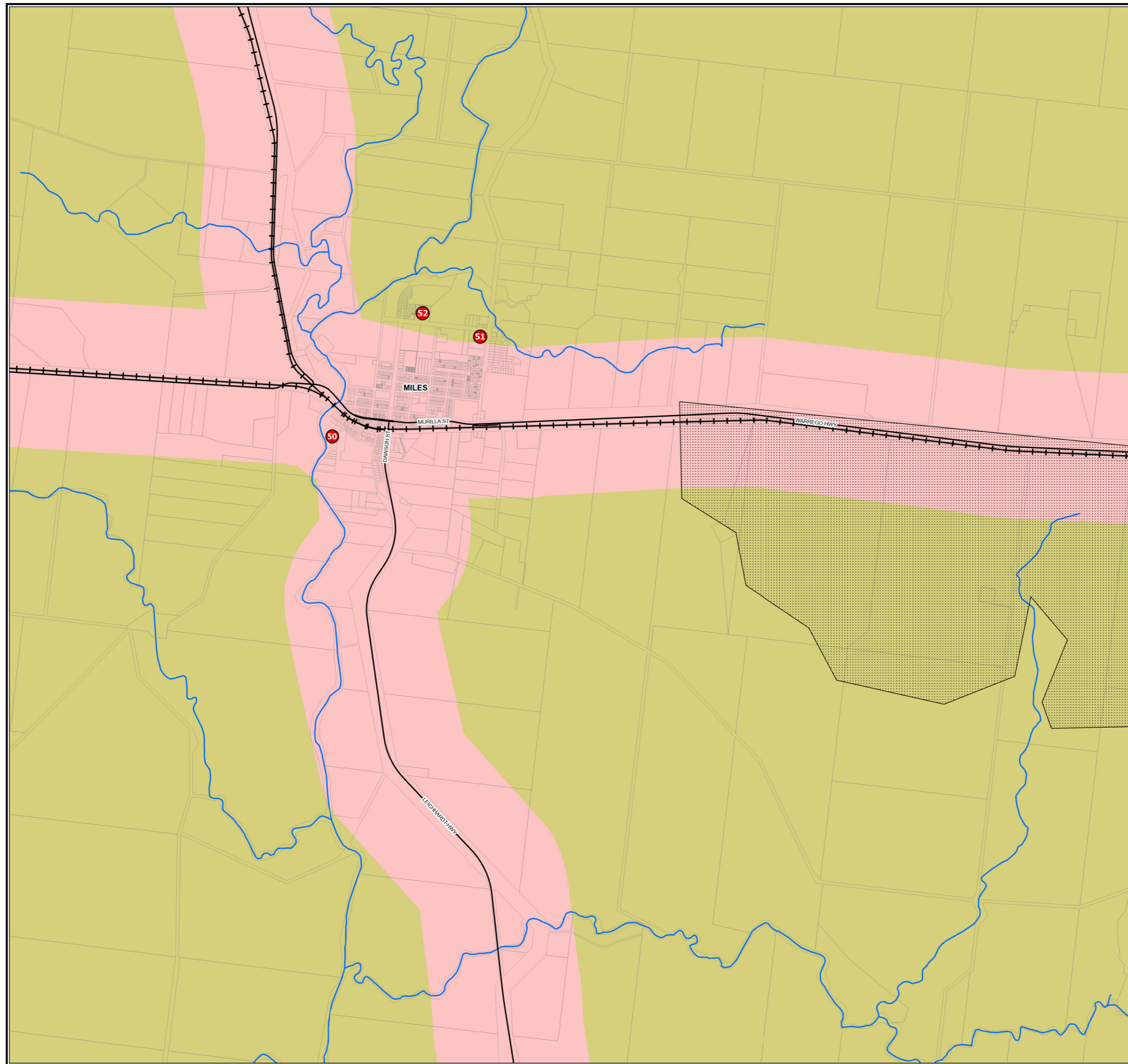
Base material reproduced with the permission of the Director-General, Department of Resources © The State of Queensland (Department of Resources) [2023]

**DATA SOURCES:** WDRC, QSpatial  
Cadastral Boundaries - May 2023 (© State of Queensland (Department of Resources) 2021)  
State Heritage - May 2023 (© State of Queensland (Department of Environment and Science) 2023)

© Copyright Western Downs Regional Council 2023  
Date Generated : 23/05/2023  
Revision 3.0  
Coordinate System: GDA 1994 MGA Zone 56



SPM-003 (Miles)



Legend

- Forested & Woodland Downs
- Open Downs
- High Landscape Value Areas
- Mountain Peaks
- Scenic Routes
- Airport Enterprise Area
- Landing Ground
- Waterbody
- Significant Waterway Crossing
- Register of National Estate
- Queensland Health Register
- Known Cemeteries and Burial Sites

General Information

- Council Boundary
- Cadastre
- Main Roads
- Railway Network
- Waterways

**DRAFT**

**DISCLAIMER:**  
While every care is taken to ensure the accuracy of this product, the Western Downs Regional Council does not make any representations or warranties about its accuracy, reliability, completeness or suitability for any particular purpose and disclaims all responsibility and all liability (including without limitation, liability in negligence) for all expenses, losses, damages (including indirect or consequential damage) and costs that may occur as a result of the product being inaccurate or incomplete in any way or for any reason.

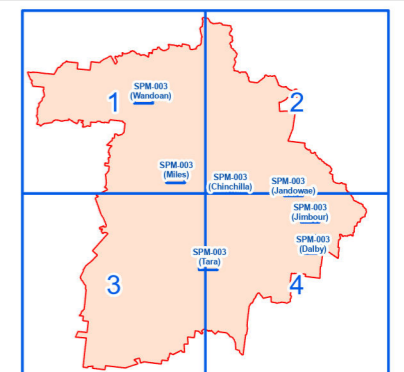
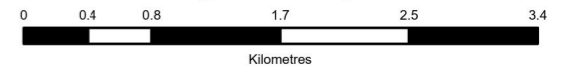
Base material reproduced with the permission of the Director-General, Department of Resources © The State of Queensland (Department of Resources) [2023]

**DATA SOURCES:** WDRC, QSpatial  
Cadastral Boundaries - May 2023 (© State of Queensland (Department of Resources) 2021)  
State Heritage - May 2023 (© State of Queensland (Department of Environment and Science) 2023)

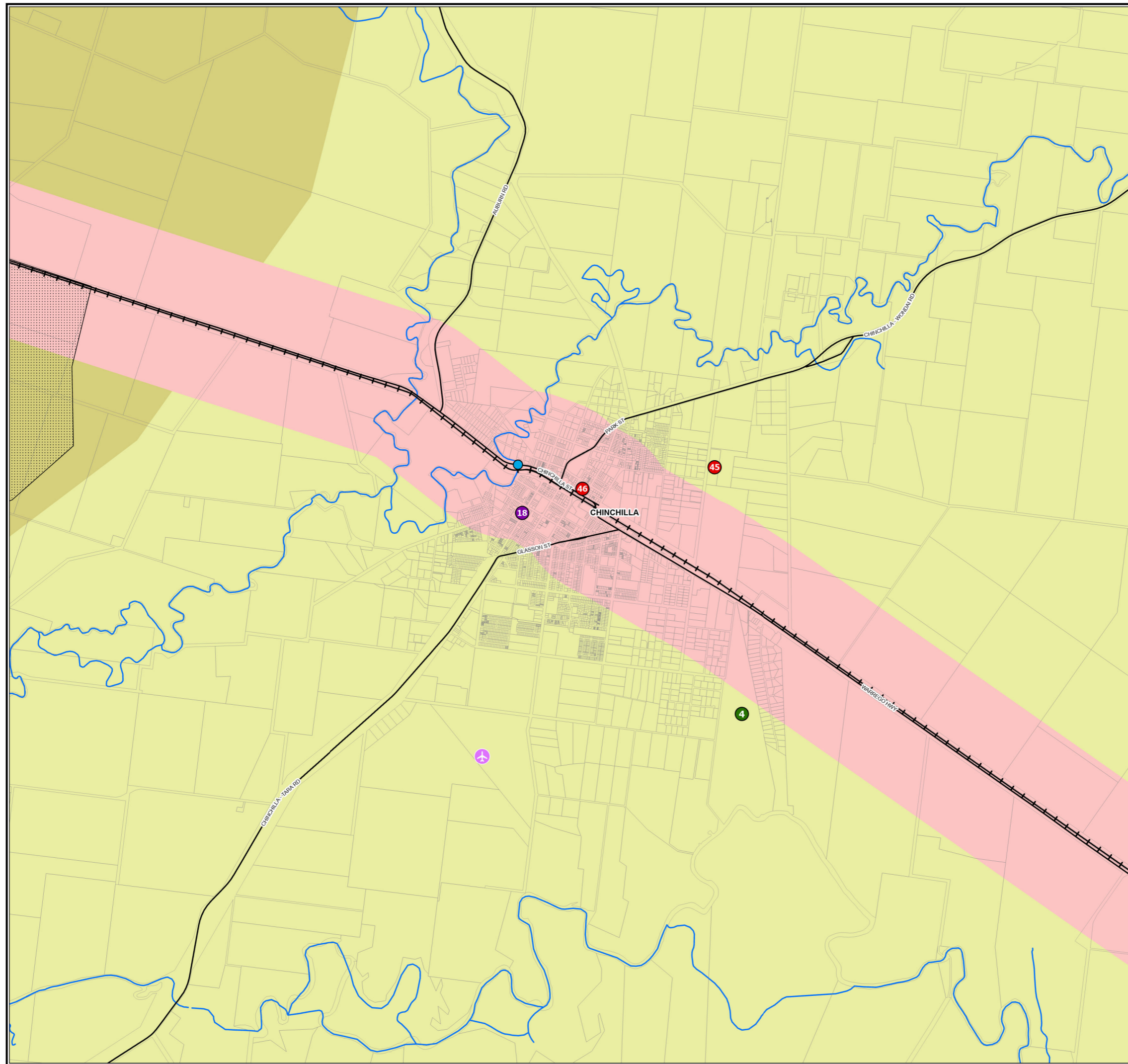
© Copyright Western Downs Regional Council 2023  
Date Generated : 23/05/2023  
Revision 3.0  
Coordinate System: GDA 1994 MGA Zone 56



Approx Scale @ A3 - 1:50,000














SPM-003 (Chinchilla)

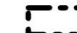

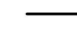
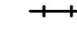





Legend

-  Open Downs
-  High Landscape Value Areas
-  Mountain Peaks
-  Scenic Routes
-  Airport Enterprise Area
-  Landing Ground
-  Waterbody
-  Significant Waterway Crossing
-  Register of National Estate
-  Queensland Health Register
-  Known Cemeteries and Burial Sites

General Information

-  Council Boundary
-  Cadastre
-  Main Roads
-  Railway Network
-  Waterways

**DRAFT**

**DISCLAIMER:**  
While every care is taken to ensure the accuracy of this product, the Western Downs Regional Council does not make any representations or warranties about its accuracy, reliability, completeness or suitability for any particular purpose and disclaims all responsibility and all liability (including without limitation, liability in negligence) for all expenses, losses, damages (including indirect or consequential damage) and costs that may occur as a result of the product being inaccurate or incomplete in any way or for any reason.

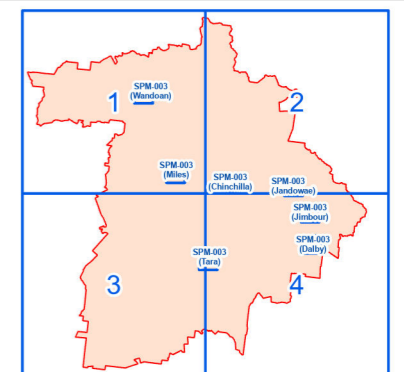
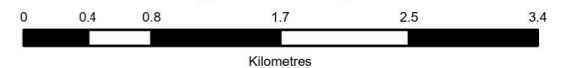
Base material reproduced with the permission of the Director-General, Department of Resources © The State of Queensland (Department of Resources) [2023]

**DATA SOURCES:** WDRC, QSpatial  
Cadastral Boundaries - May 2023 (© State of Queensland (Department of Resources) 2021)  
State Heritage - May 2023 (© State of Queensland (Department of Environment and Science) 2023)

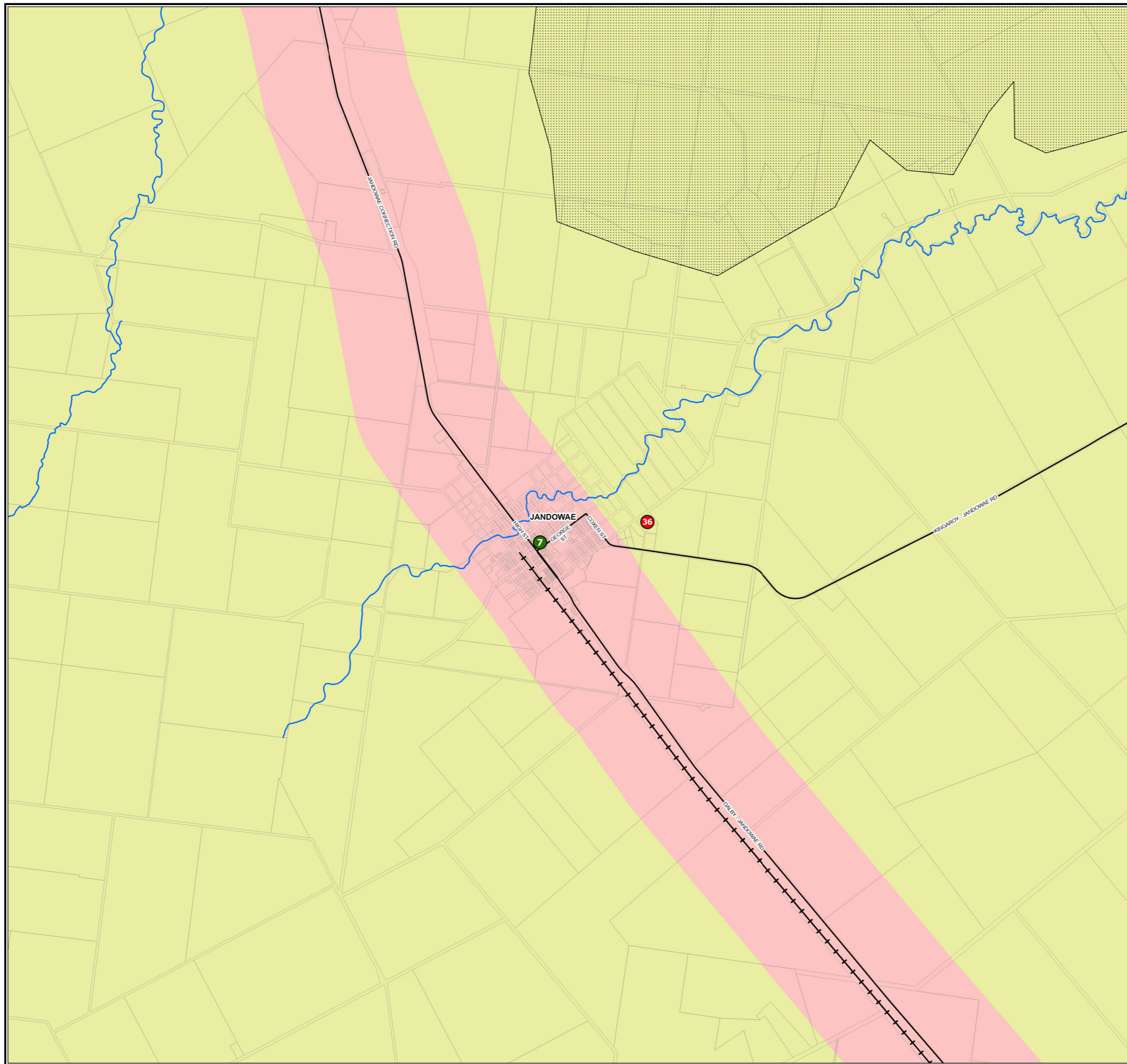
© Copyright Western Downs Regional Council 2023  
Date Generated : 23/05/2023  
Revision 3.0  
Coordinate System: GDA 1994 MGA Zone 56















Approx Scale @ A3 - 1:50,000






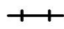

SPM-003 (Jandowae)



Legend

-  Grazed Uplands
-  Open Downs
-  High Landscape Value Areas
-  Mountain Peaks
-  Scenic Routes
-  Airport Enterprise Area
-  Landing Ground
-  Waterbody
-  Significant Waterway Crossing
-  Register of National Estate
-  Queensland Health Register
-  Known Cemeteries and Burial Sites

General Information

-  Council Boundary
-  Cadastre
-  Main Roads
-  Railway Network
-  Waterways

**DRAFT**

**DISCLAIMER:**  
While every care is taken to ensure the accuracy of this product, the Western Downs Regional Council does not make any representations or warranties about its accuracy, reliability, completeness or suitability for any particular purpose and disclaims all responsibility and all liability (including without limitation, liability in negligence) for all expenses, losses, damages (including indirect or consequential damage) and costs that may occur as a result of the product being inaccurate or incomplete in any way or for any reason.

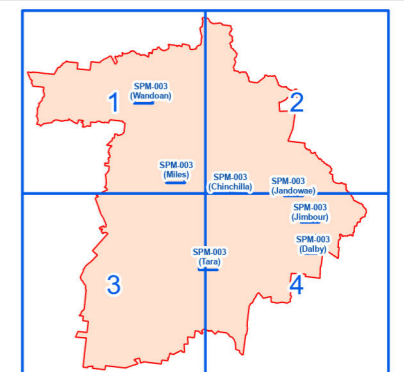
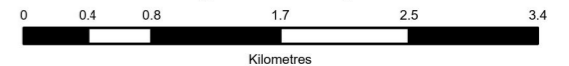
Base material reproduced with the permission of the Director-General, Department of Resources © The State of Queensland (Department of Resources) [2023]

**DATA SOURCES:** WDRC, QSpatial  
Cadastral Boundaries - May 2023 (© State of Queensland (Department of Resources) 2021)  
State Heritage - May 2023 (© State of Queensland (Department of Environment and Science) 2023)

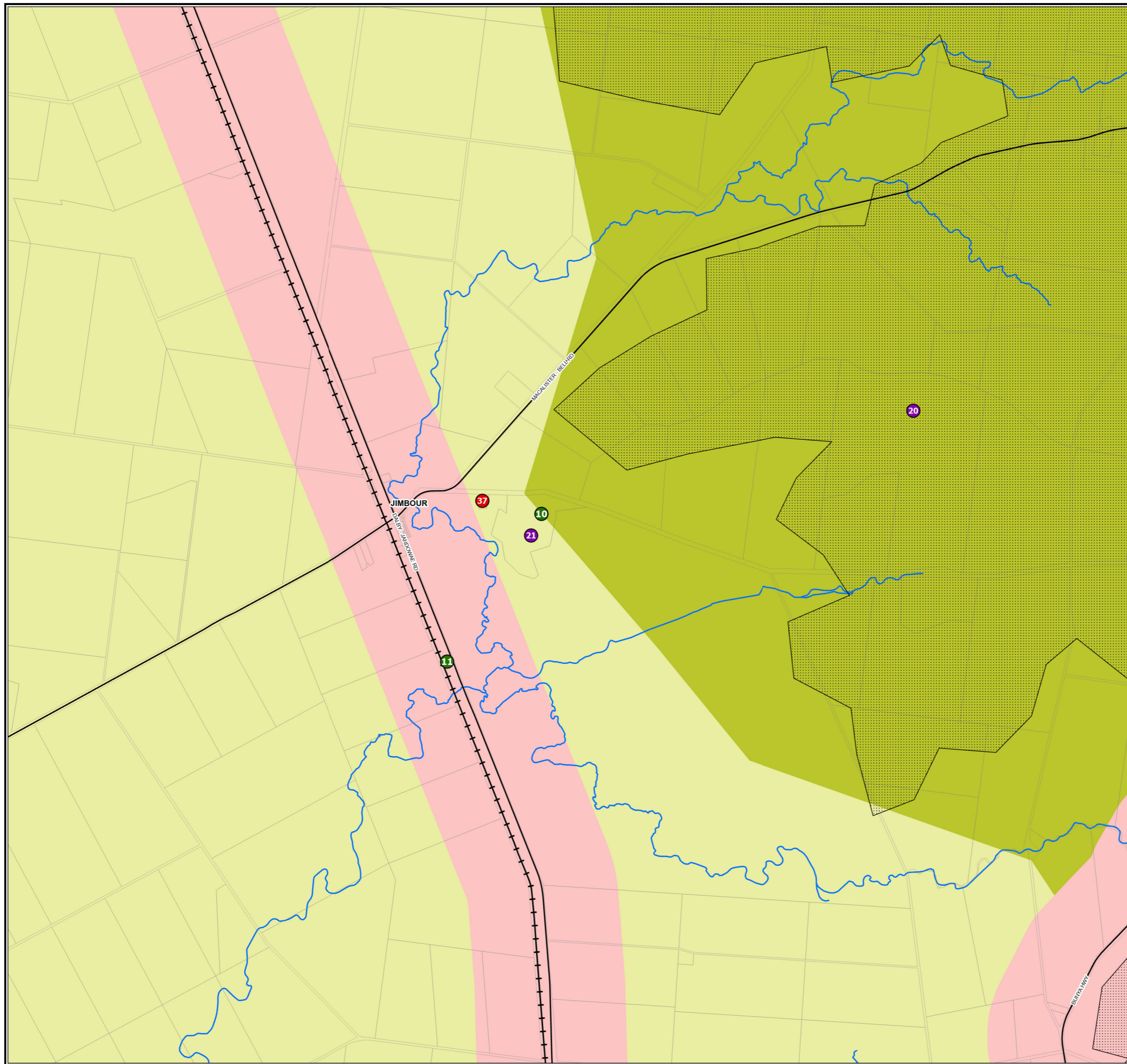
© Copyright Western Downs Regional Council 2023  
Date Generated : 23/05/2023  
Revision 3.0  
Coordinate System: GDA 1994 MGA Zone 56



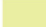










Approx Scale @ A3 - 1:50,000





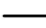
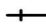

SPM-003 (Jimbour)



Legend

-  Open Downs
-  High Landscape Value Areas
-  Mountain Peaks
-  Scenic Routes
-  Airport Enterprise Area
-  Landing Ground
-  Waterbody
-  Significant Waterway Crossing
-  Register of National Estate
-  Queensland Health Register
-  Known Cemeteries and Burial Sites

General Information

-  Council Boundary
-  Cadastre
-  Main Roads
-  Railway Network
-  Waterways

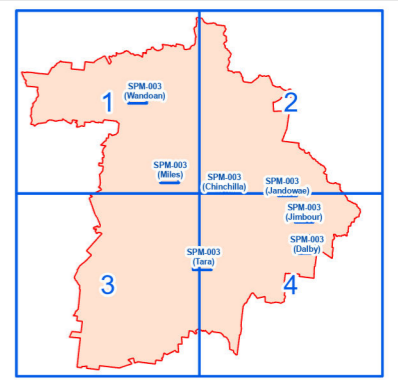
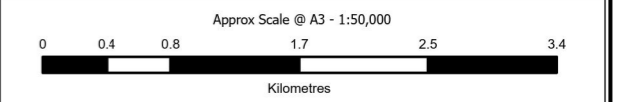
**DRAFT**

**DISCLAIMER:**  
While every care is taken to ensure the accuracy of this product, the Western Downs Regional Council does not make any representations or warranties about its accuracy, reliability, completeness or suitability for any particular purpose and disclaims all responsibility and all liability (including without limitation, liability in negligence) for all expenses, losses, damages (including indirect or consequential damage) and costs that may occur as a result of the product being inaccurate or incomplete in any way or for any reason.

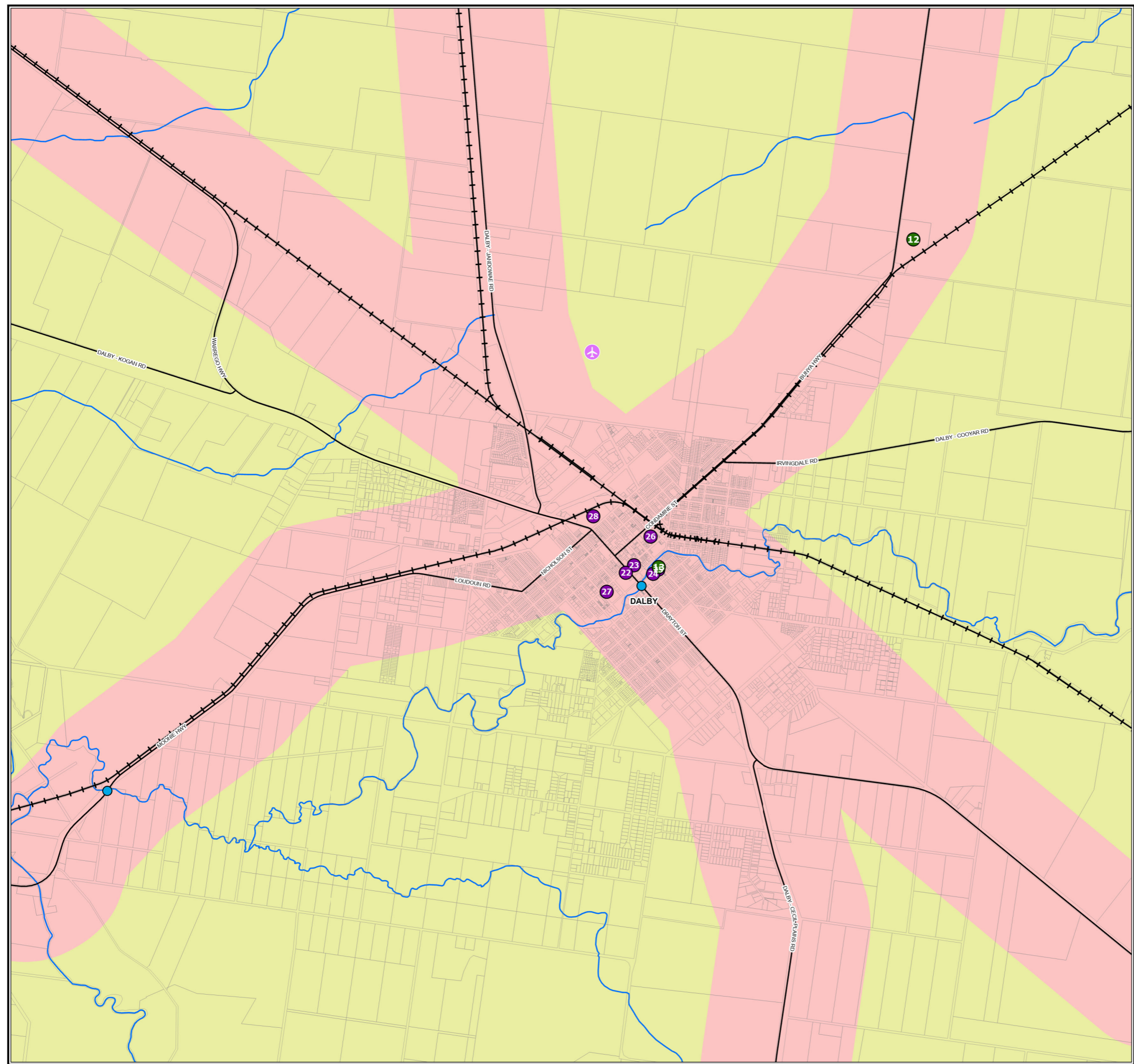
Base material reproduced with the permission of the Director-General, Department of Resources © The State of Queensland (Department of Resources) [2023]

**DATA SOURCES:** WDRC, QSpatial  
Cadastral Boundaries - May 2023 (© State of Queensland (Department of Resources) 2021)  
State Heritage - May 2023 (© State of Queensland (Department of Environment and Science) 2023)

© Copyright Western Downs Regional Council 2023  
Date Generated : 23/05/2023  
Revision 3.0  
Coordinate System: GDA 1994 MGA Zone 56



SPM-003 (Dalby)



Legend

- Forested & Woodland Downs
- Open Downs
- High Landscape Value Areas
- Mountain Peaks
- Scenic Routes
- Airport Enterprise Area
- Landing Ground
- Waterbody
- Significant Waterway Crossing
- Register of National Estate
- Queensland Health Register
- Known Cemeteries and Burial Sites

General Information

- Council Boundary
- Cadastre
- Main Roads
- Railway Network
- Waterways

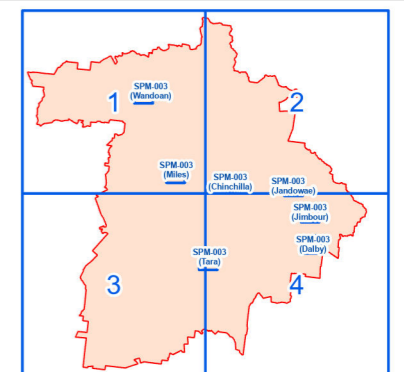
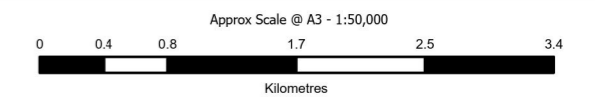
DRAFT

**DISCLAIMER:**  
While every care is taken to ensure the accuracy of this product, the Western Downs Regional Council does not make any representations or warranties about its accuracy, reliability, completeness or suitability for any particular purpose and disclaims all responsibility and all liability (including without limitation, liability in negligence) for all expenses, losses, damages (including indirect or consequential damage) and costs that may occur as a result of the product being inaccurate or incomplete in any way or for any reason.

Base material reproduced with the permission of the Director-General, Department of Resources © The State of Queensland (Department of Resources) [2023]

**DATA SOURCES:** WDRC, QSpatial  
Cadastral Boundaries - May 2023 (© State of Queensland (Department of Resources) 2021)  
State Heritage - May 2023 (© State of Queensland (Department of Environment and Science) 2023)

© Copyright Western Downs Regional Council 2023  
Date Generated : 23/05/2023  
Revision 3.0  
Coordinate System: GDA 1994 MGA Zone 56



SPM-003 (Tara)

